



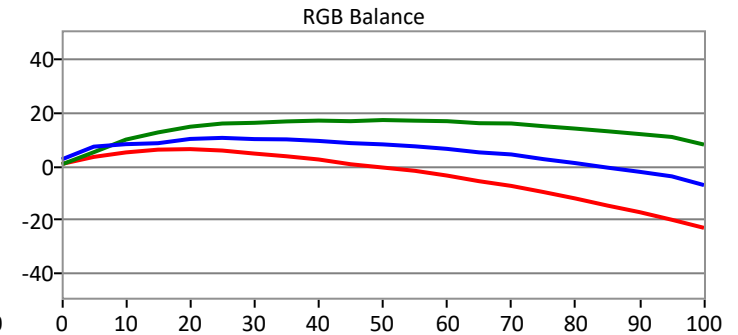
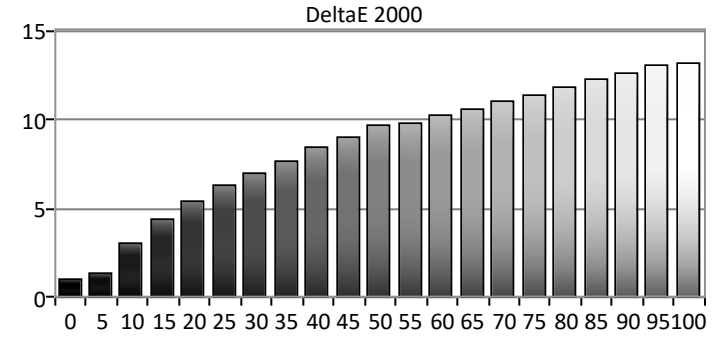
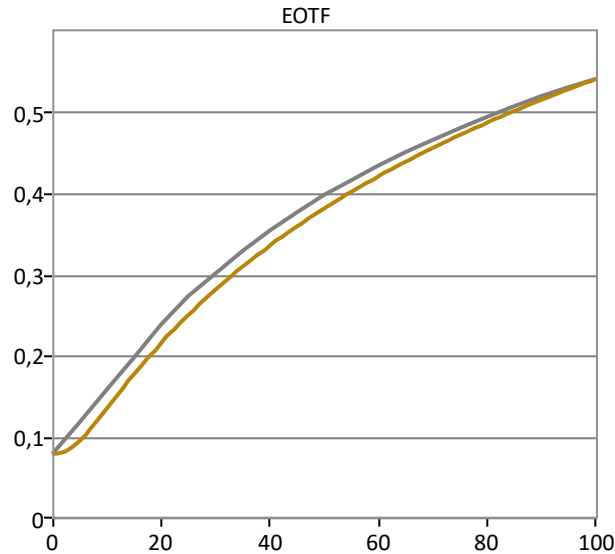
CHRISTIAN SAURE
DIGITAL IMAGING TECHNICIAN
POSTPRODUCTION

Pre Calibration

Name: Christian Saure

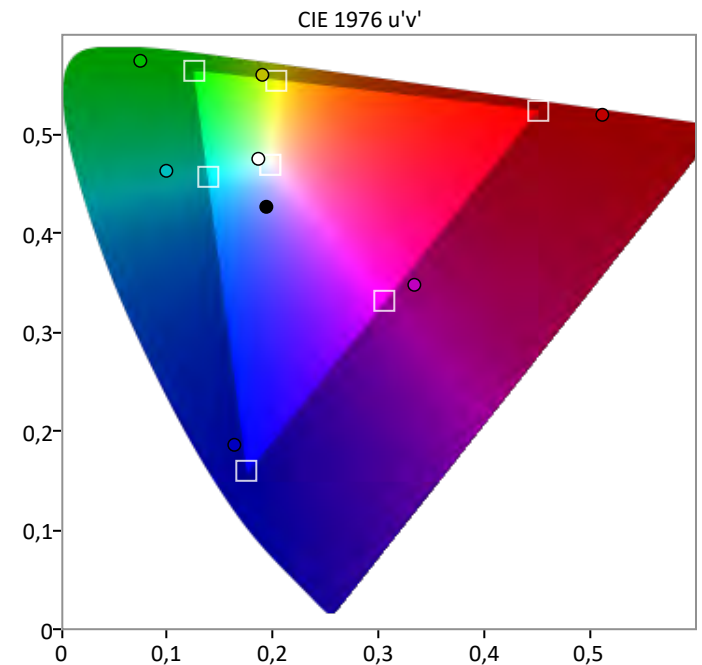
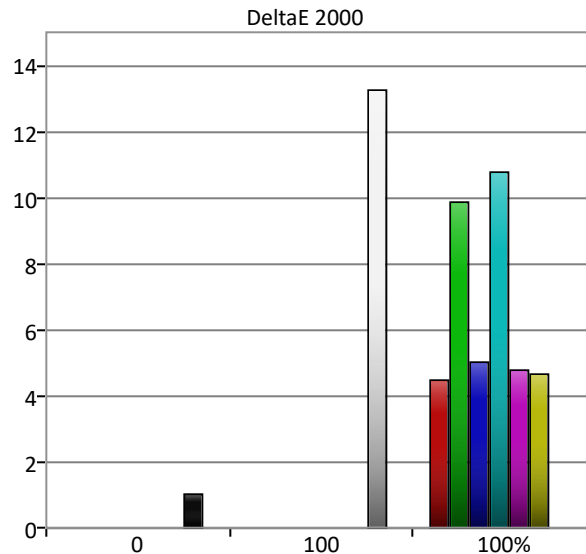
Grayscale

Grayscale Avg dE: 2000 8,9
Grayscale Max dE: 2000 13,2



Colorspace

Colorspace Avg dE: 2000 7,6
Colorspace Max dE: 2000 13,3



Manufacturer: SmallHD
Model: CINE24

Meter: X-Rite i1Pro 2
Source: Phabrix Sx





CHRISTIAN SAURE
DIGITAL IMAGING TECHNICIAN
POSTPRODUCTION

Post Calibration

Name: Christian Saure

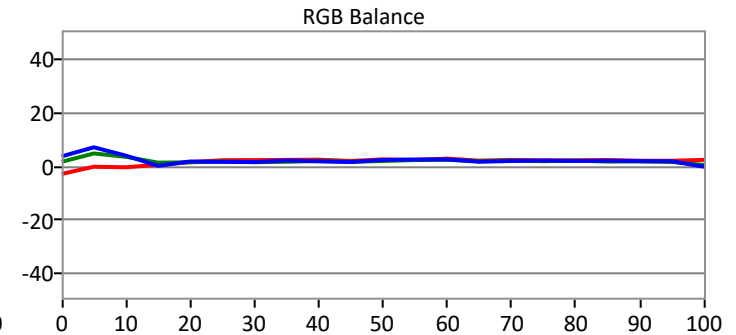
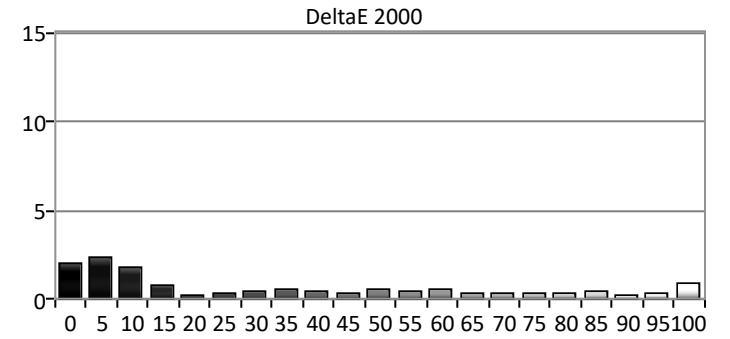
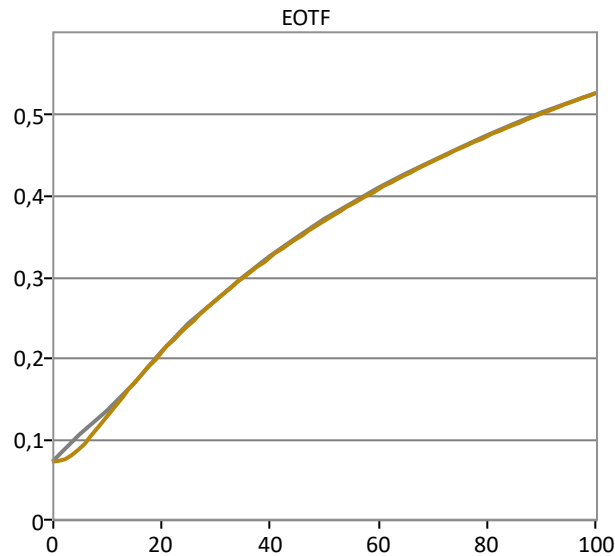
Manufacturer: SmallHD
Model: CINE24

Meter: X-Rite i1Pro 2
Source: Phabrix Sx



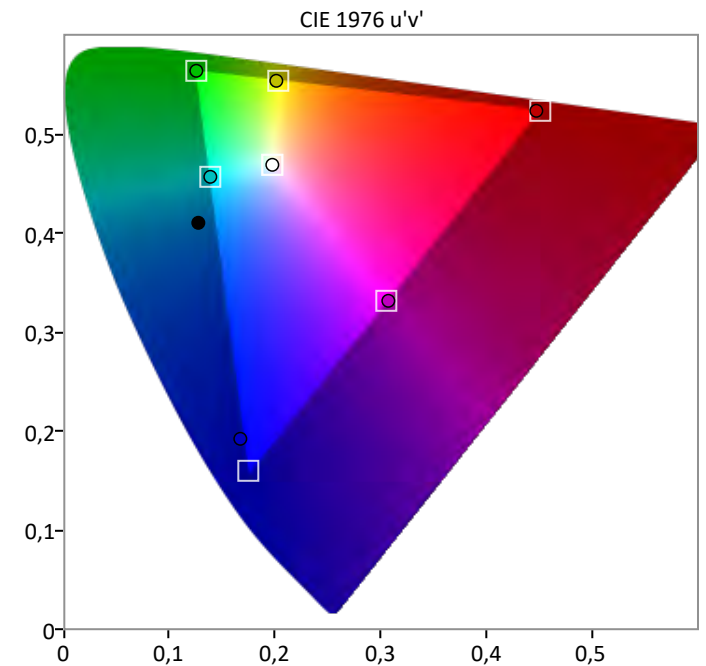
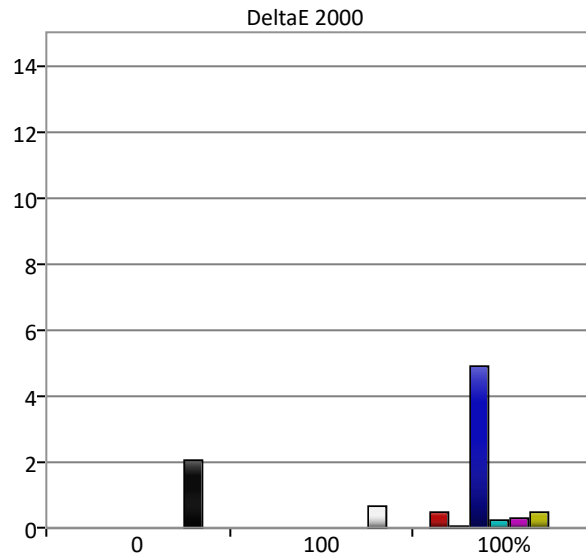
Grayscale

Grayscale Avg dE: 2000 0,6
Grayscale Max dE: 2000 2,4



Colorspace

Colorspace Avg dE: 2000 1
Colorspace Max dE: 2000 4,9





CHRISTIAN SAURE
DIGITAL IMAGING TECHNICIAN
POSTPRODUCTION

ColorChecker

Name: Christian Saure

Manufacturer: SmallHD
Model: CINE24

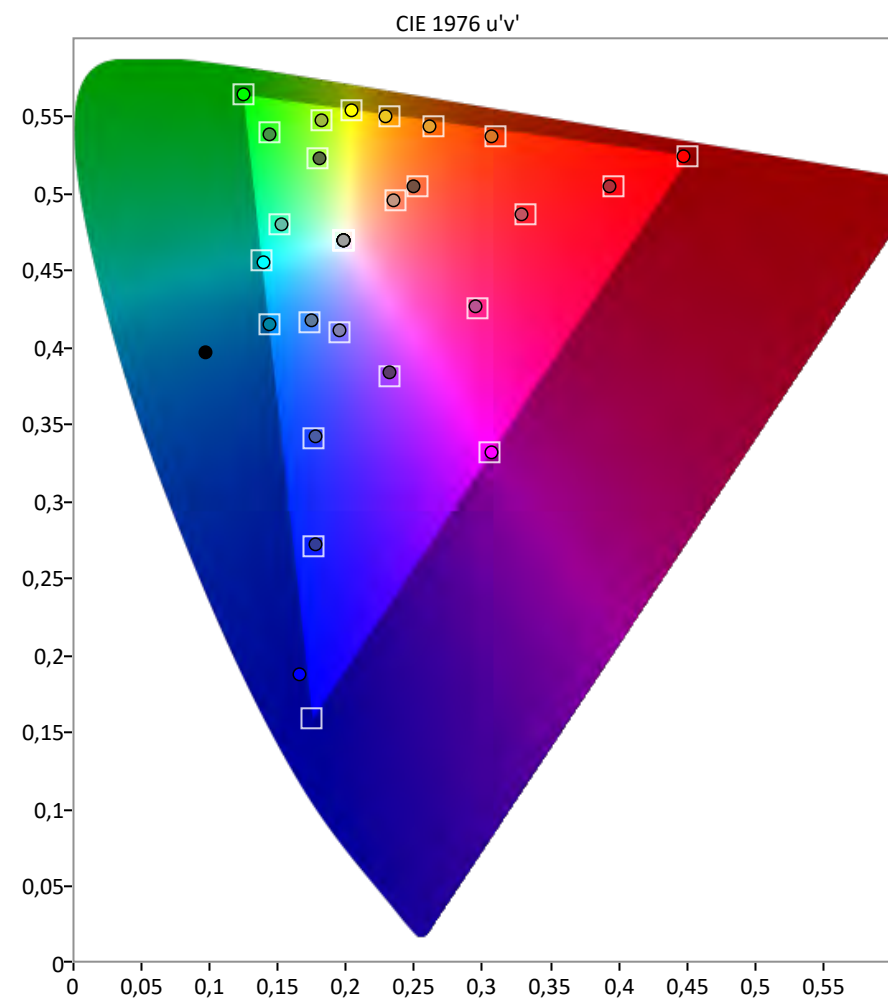
Meter: X-Rite i1Pro 2
Source: Phabrix Sx



ColorChecker



Saturations Avg dE: 2000 0,6
Saturations Max dE: 2000 5,3



Saturation Sweeps



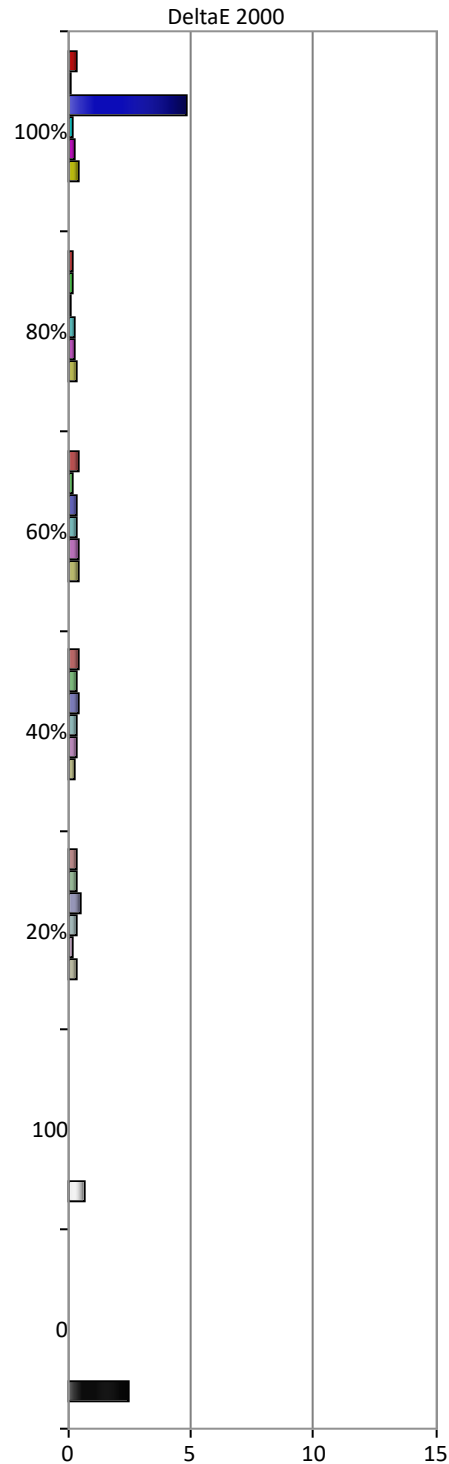
CHRISTIAN SAURE
DIGITAL IMAGING TECHNICIAN
POSTPRODUCTION

Saturations

Name: Christian Saure

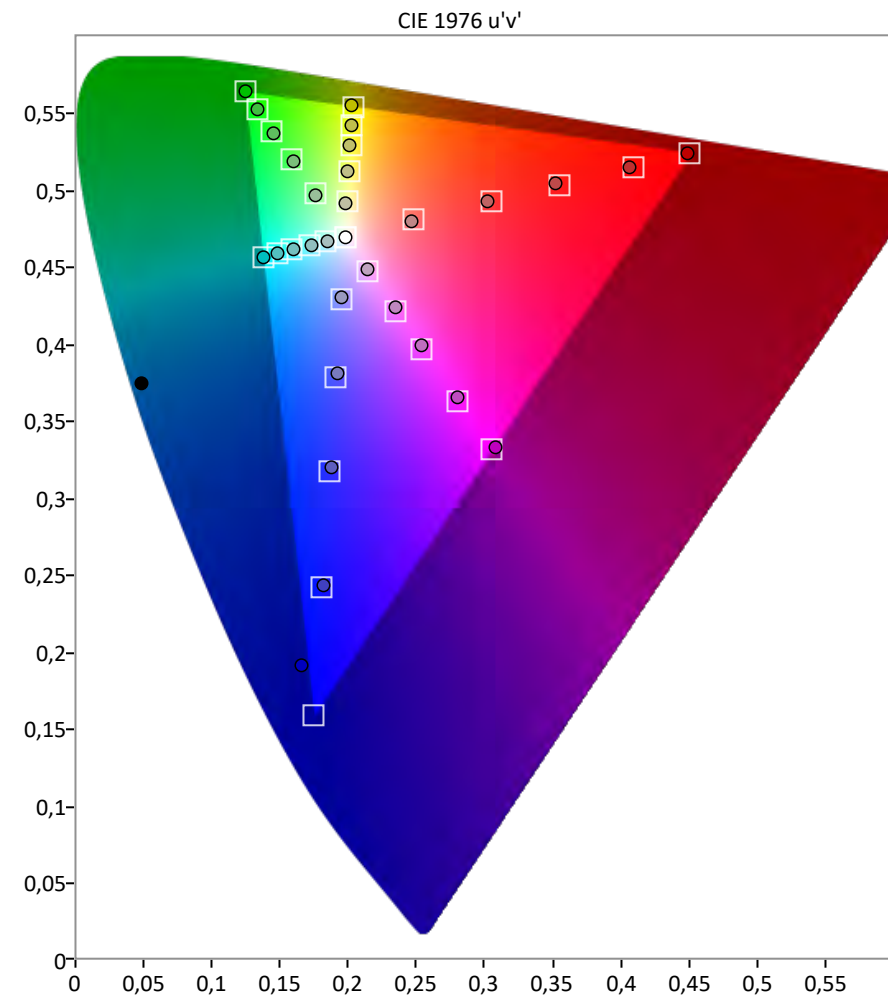
Manufacturer: SmallHD
Model: CINE24

Meter: X-Rite i1Pro 2
Source: Phabrix Sx



Saturations Avg dE: 2000 0,5

Saturations Max dE: 2000 4,8





CHRISTIAN SAURE
DIGITAL IMAGING TECHNICIAN
POSTPRODUCTION

Pre Calibration

Name: Christian Saure

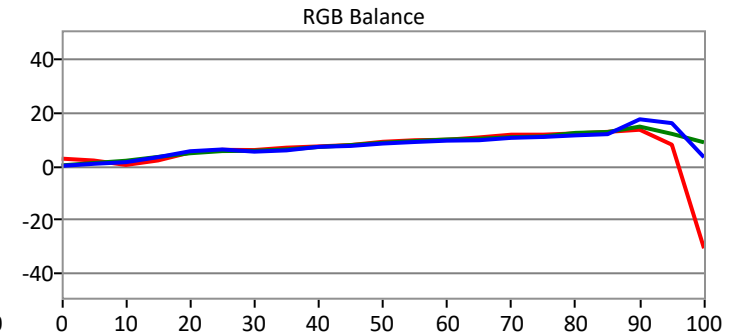
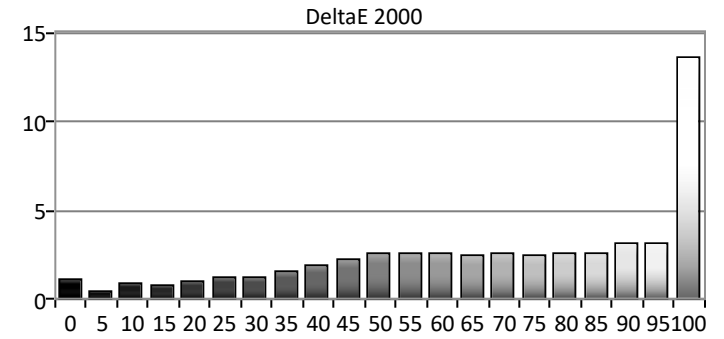
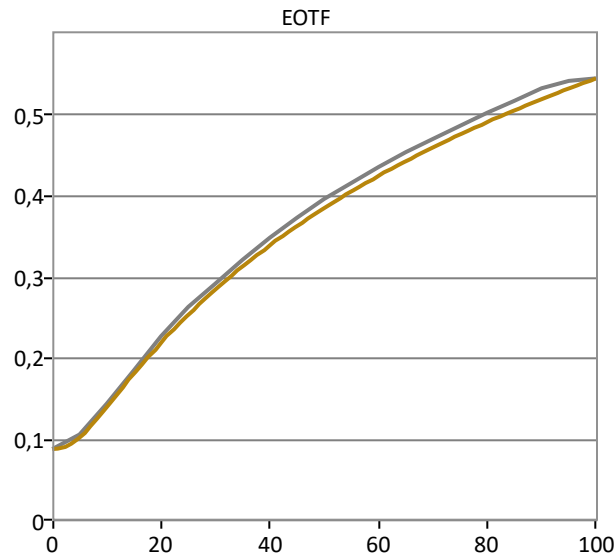
Manufacturer: SmallHD
Model: OLED22

Meter: X-Rite i1Pro 2
Source: Phabrix Sx



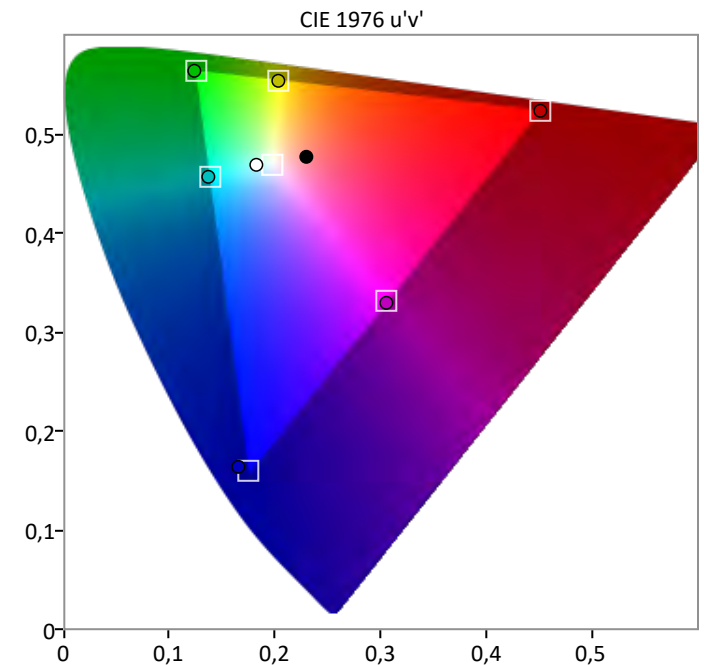
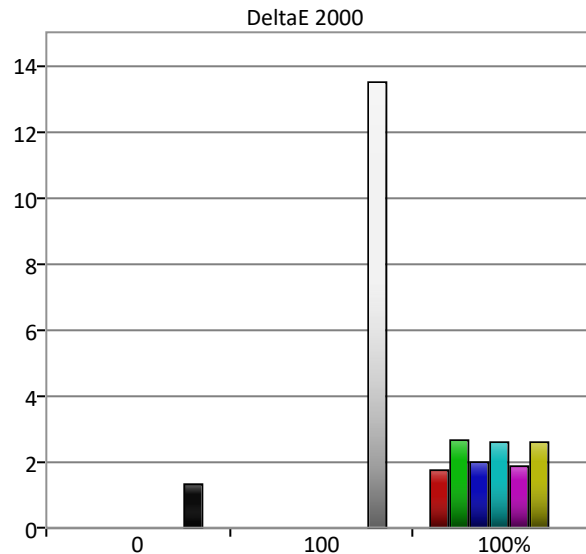
Grayscale

Grayscale Avg dE: 2000 2,6
Grayscale Max dE: 2000 13,6



Colorspace

Colorspace Avg dE: 2000 3,9
Colorspace Max dE: 2000 13,5





CHRISTIAN SAURE
DIGITAL IMAGING TECHNICIAN
POSTPRODUCTION

Post Calibration

Name: Christian Saure

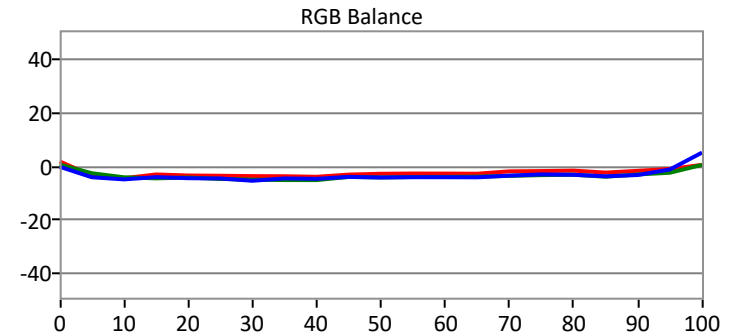
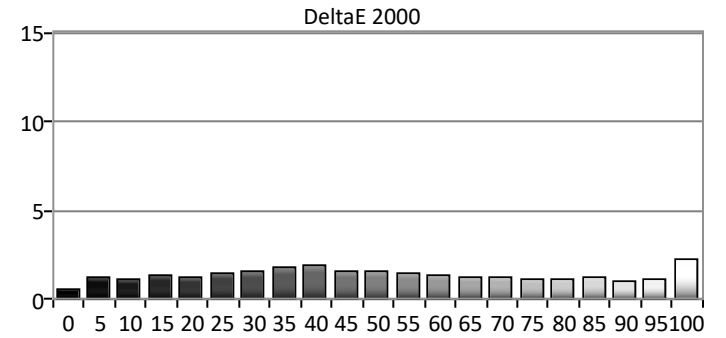
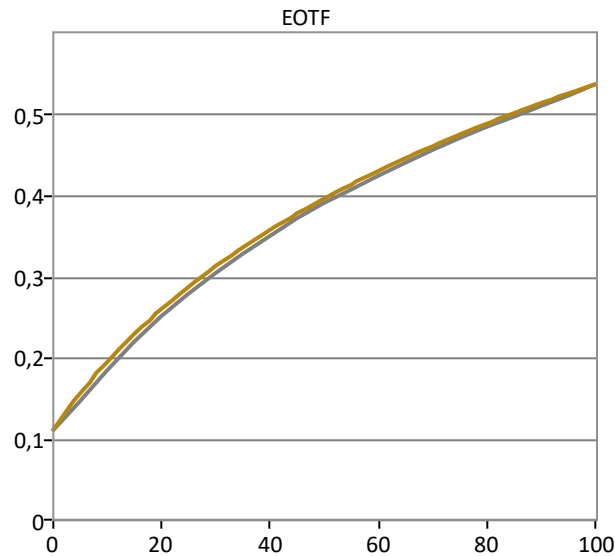
Manufacturer: SmallHD
Model: OLED22

Meter: X-Rite i1Pro 2
Source: Phabrix Sx



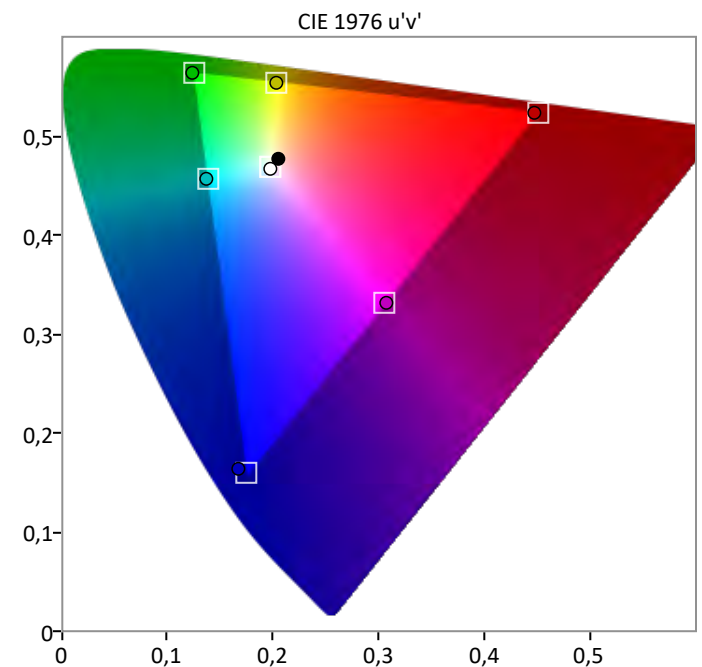
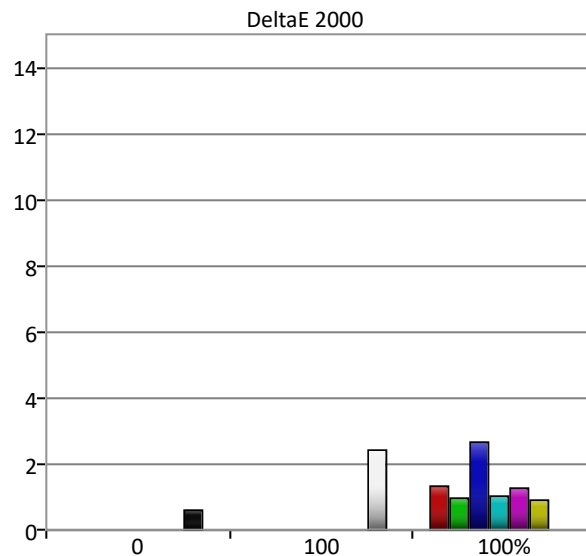
Grayscale

Grayscale Avg dE: 2000 1,4
Grayscale Max dE: 2000 2,3



Colorspace

Colorspace Avg dE: 2000 1,5
Colorspace Max dE: 2000 2,7



Saturation Sweeps



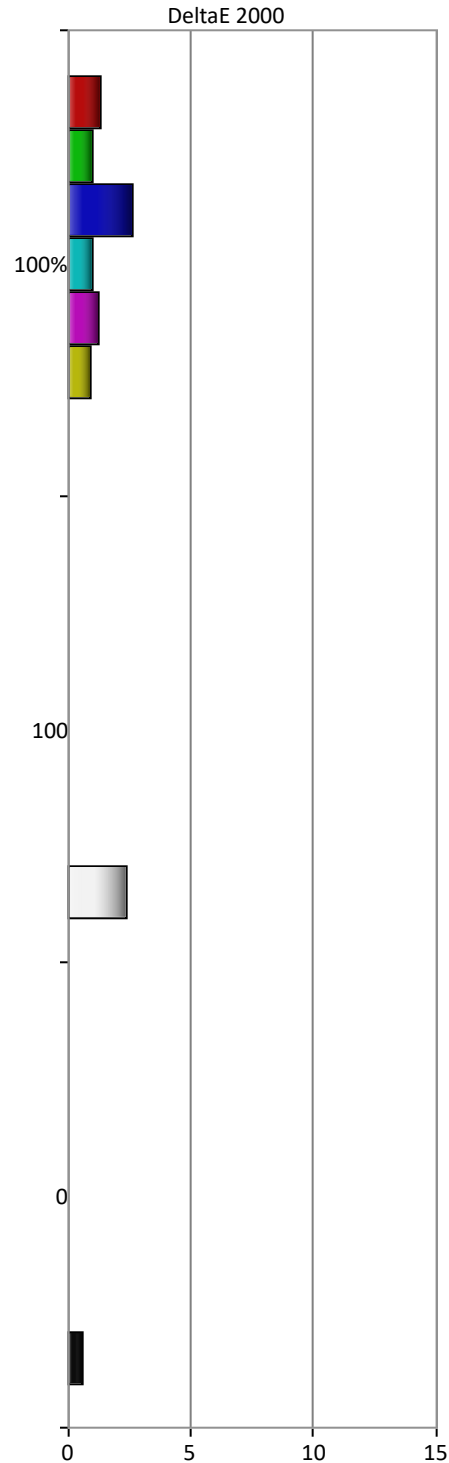
CHRISTIAN SAURE
DIGITAL IMAGING TECHNICIAN
POSTPRODUCTION

Saturations

Name: Christian Saure

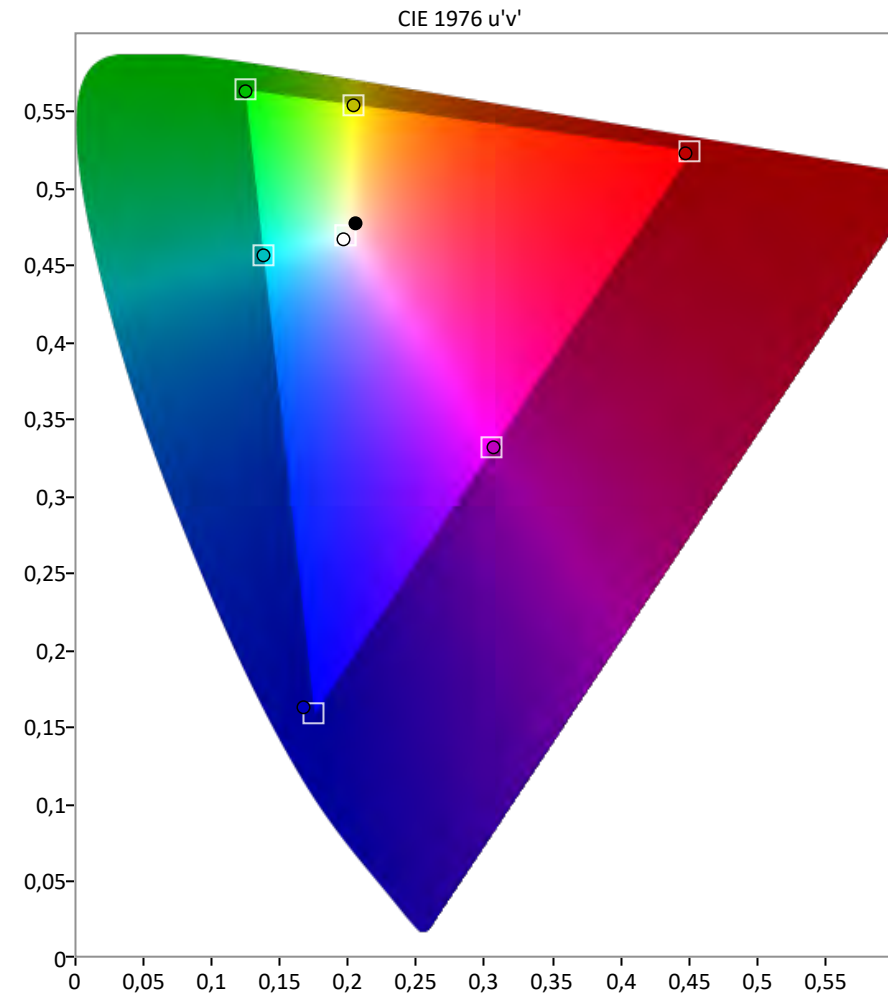
Manufacturer: SmallHD
Model: OLED22

Meter: X-Rite i1Pro 2
Source: Phabrix Sx



Saturations Avg dE: 2000 1,5

Saturations Max dE: 2000 2,7





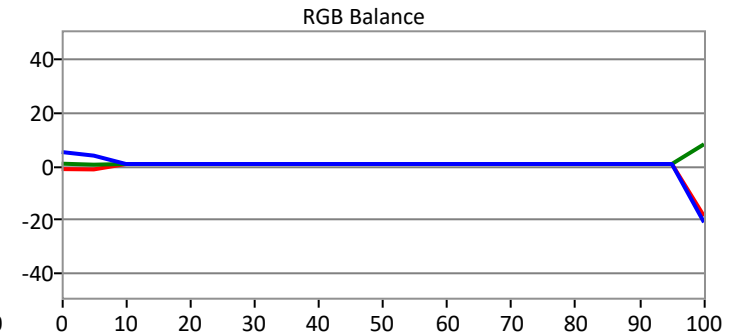
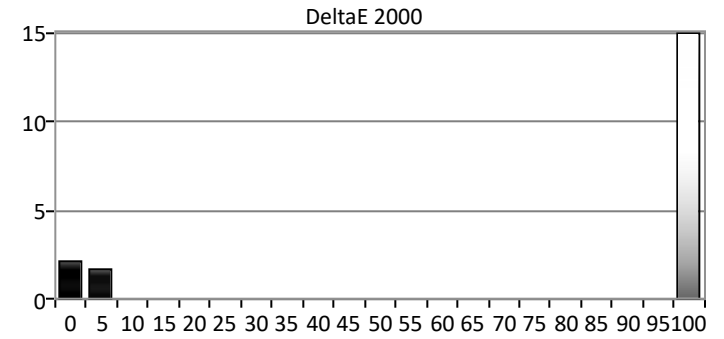
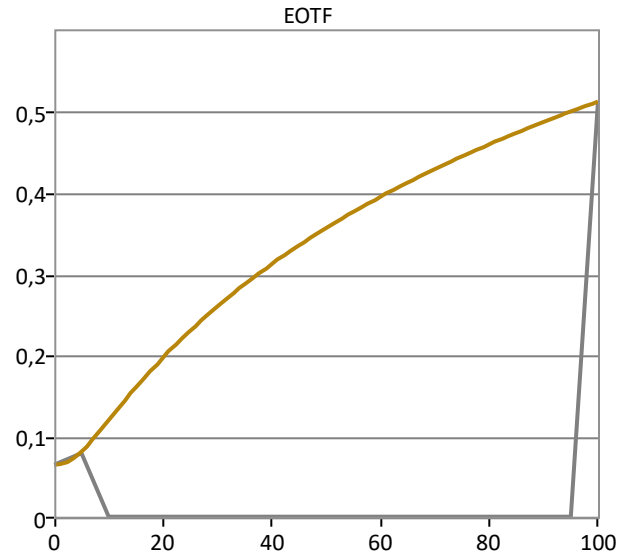
CHRISTIAN SAURE
DIGITAL IMAGING TECHNICIAN
POSTPRODUCTION

Pre Calibration

Name: Christian Saure

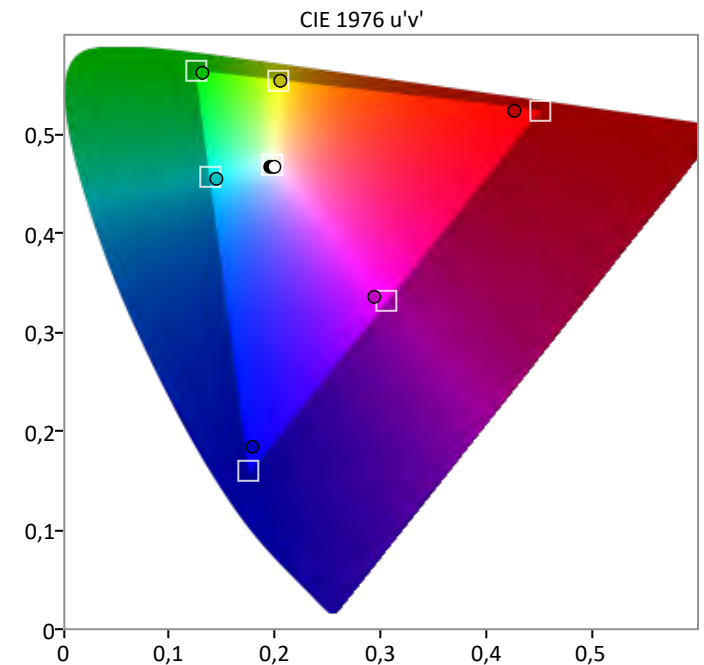
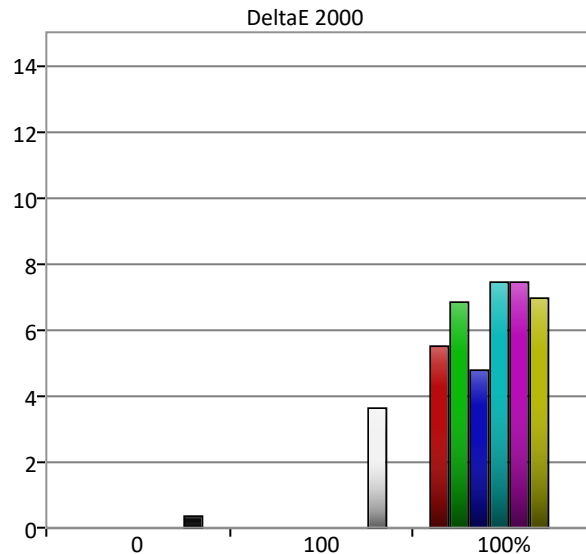
Grayscale

Grayscale Avg dE: 2000 8,3
Grayscale Max dE: 2000 14,9



Colorspace

Colorspace Avg dE: 2000 6,1
Colorspace Max dE: 2000 7,5



Manufacturer: TvLogic
Model: LUM-242H

Meter: X-Rite i1Pro 2
Source: Phabrix Sx





CHRISTIAN SAURE
DIGITAL IMAGING TECHNICIAN
POSTPRODUCTION

Post Calibration

Name: Christian Saure

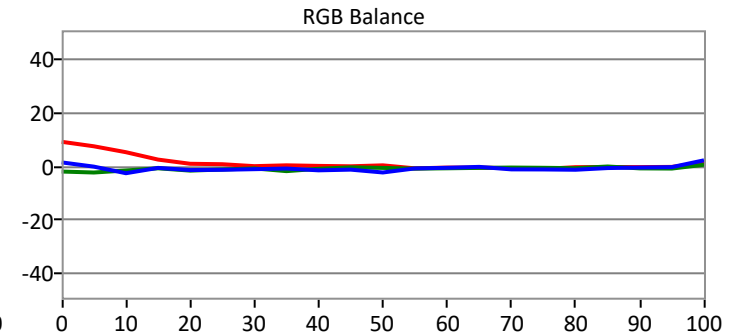
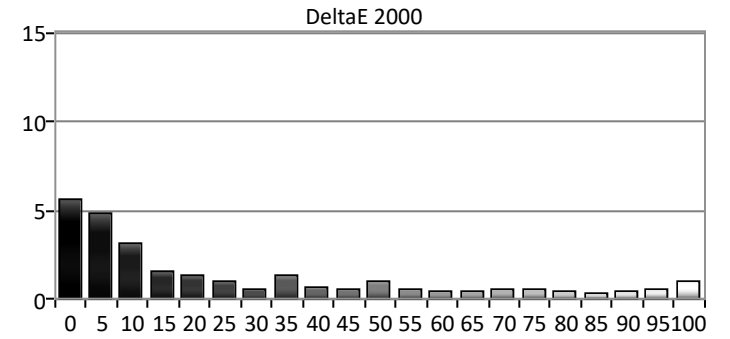
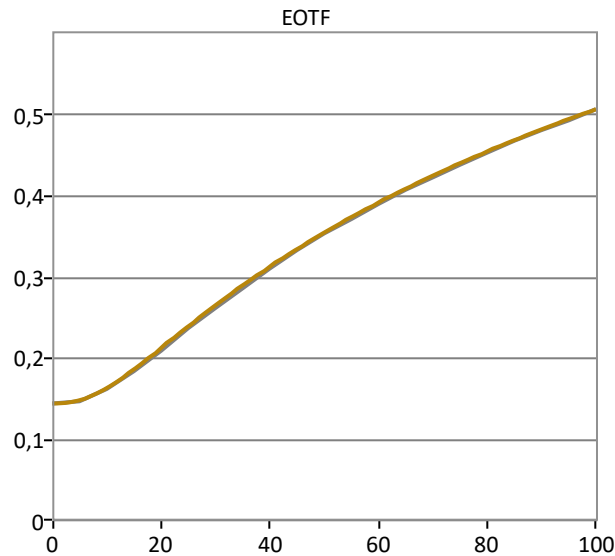
Manufacturer: TvLogic
Model: LUM-242H

Meter: X-Rite i1Pro 2
Meter Mode: Direct View



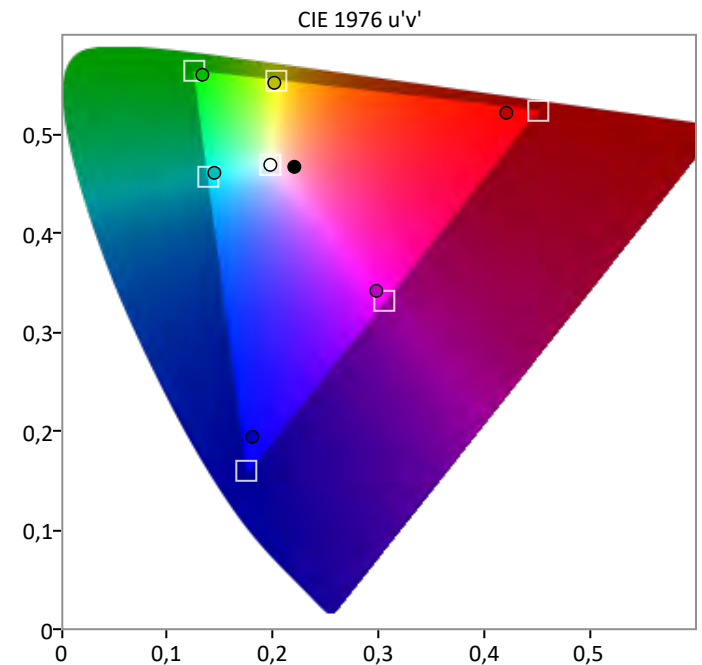
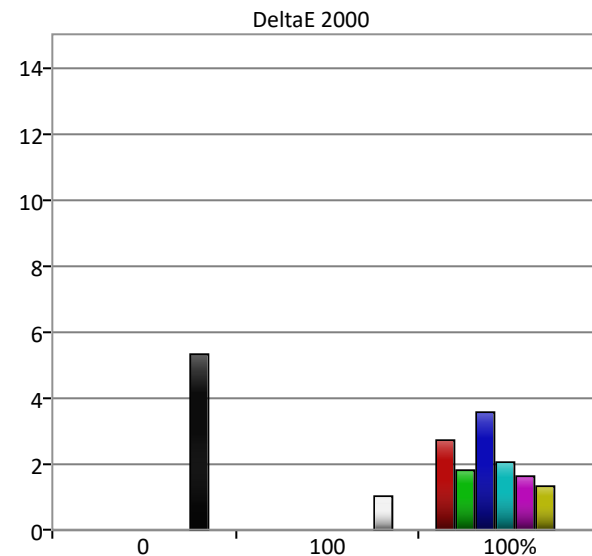
Grayscale

Grayscale Avg dE: 2000 1,1
Grayscale Max dE: 2000 4,8



Colorspace

Colorspace Avg dE: 2000 2
Colorspace Max dE: 2000 3,6





CHRISTIAN SAURE
DIGITAL IMAGING TECHNICIAN
POSTPRODUCTION

ColorChecker

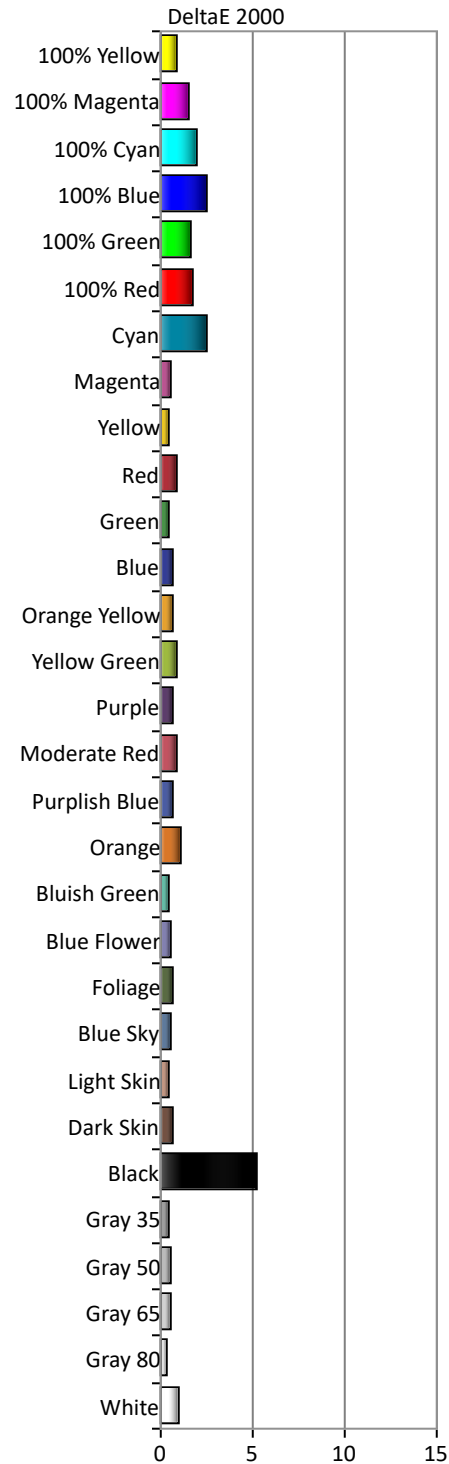
Name: Christian Saure

Manufacturer: TvLogic
Model: LUM-242H

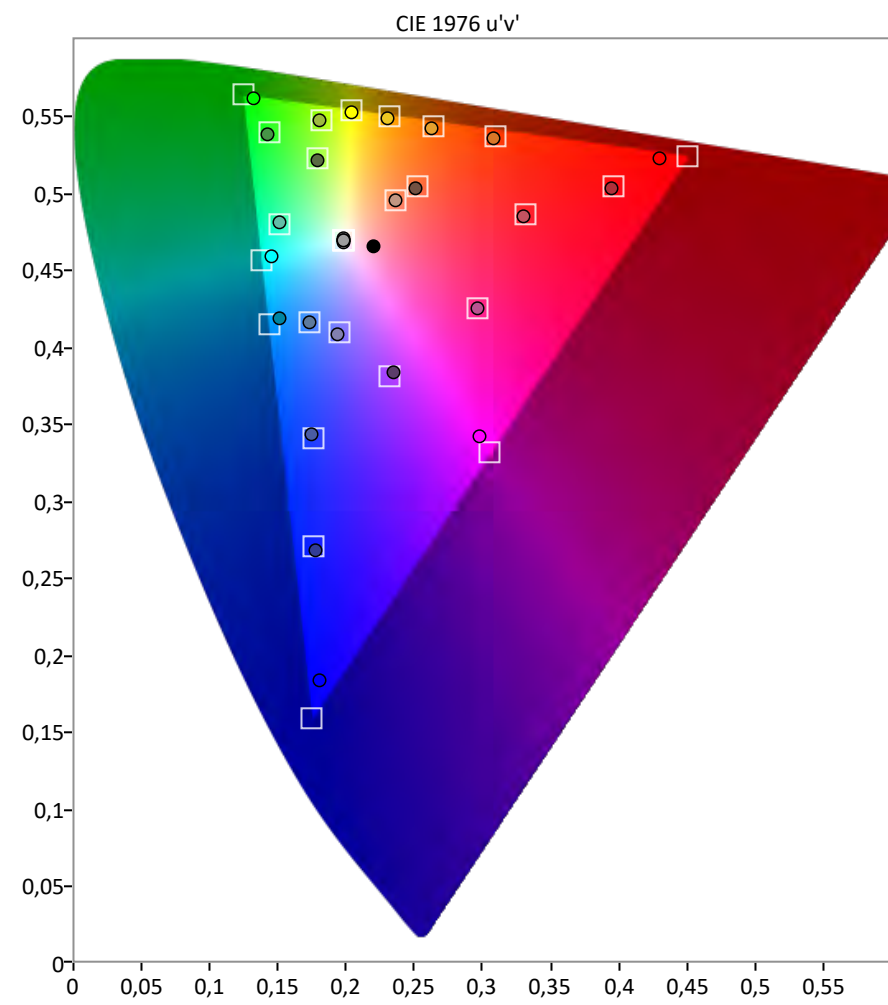
Meter: X-Rite i1Pro 2
Meter Mode: Direct View



ColorChecker



Saturations Avg dE: 2000 1
Saturations Max dE: 2000 2,6



Saturation Sweeps



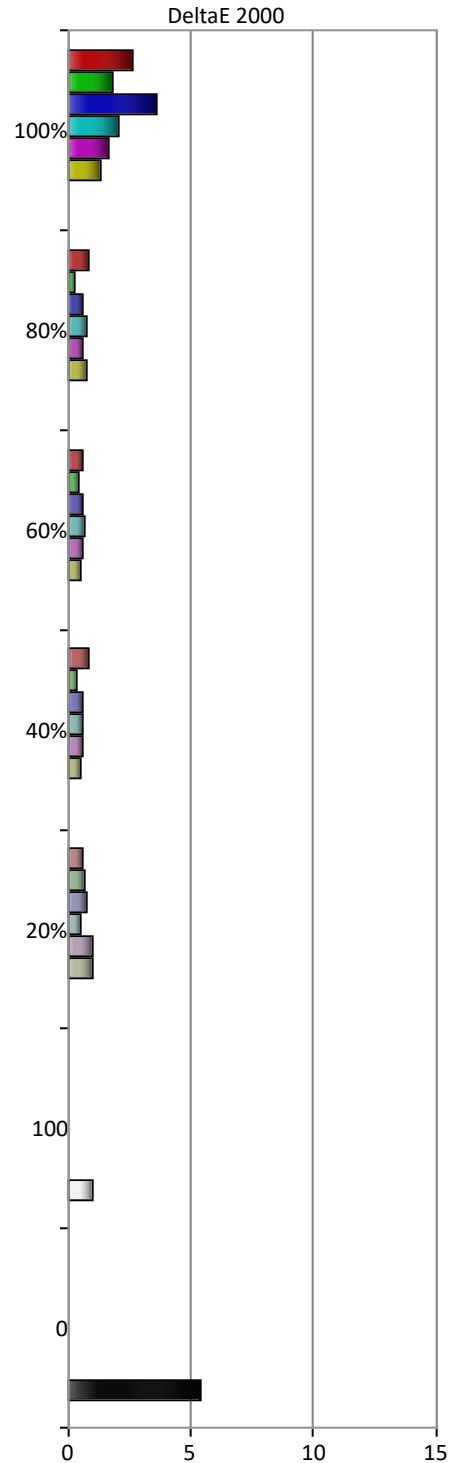
CHRISTIAN SAURE
DIGITAL IMAGING TECHNICIAN
POSTPRODUCTION

Saturations

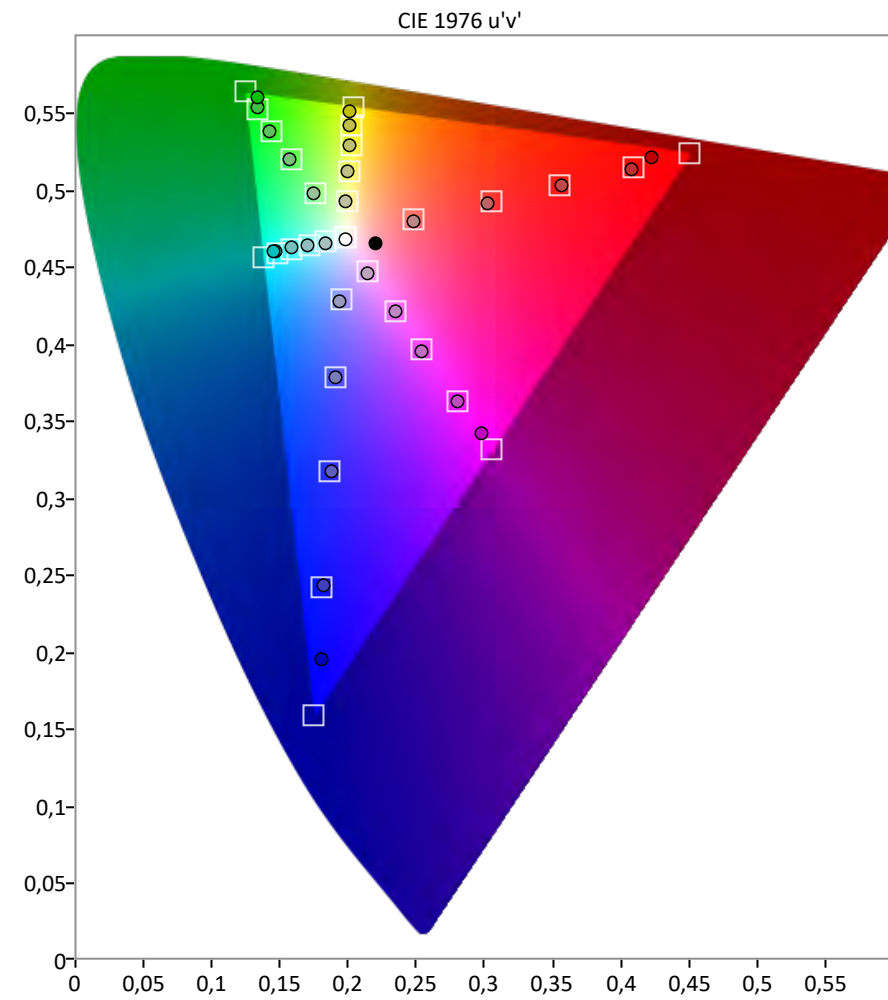
Name: Christian Saure

Manufacturer: TvLogic
Model: LUM-242H

Meter: X-Rite i1Pro 2
Meter Mode: Direct View



Saturations Avg dE: 2000 1
Saturations Max dE: 2000 3,6





CHRISTIAN SAURE
DIGITAL IMAGING TECHNICIAN
POSTPRODUCTION

Pre Calibration

Name: Christian Saure

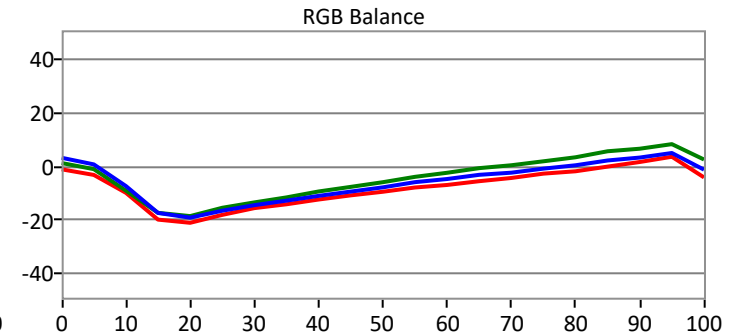
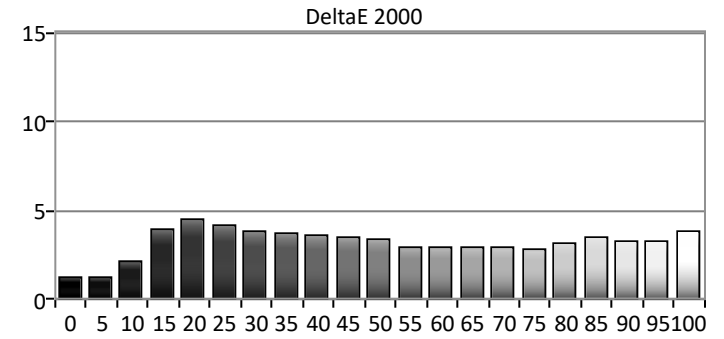
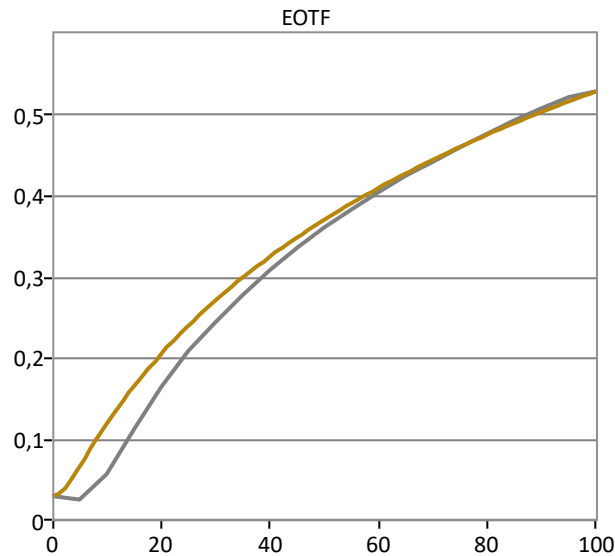
Manufacturer: TvLogic
Model: LUM-310R

Meter: X-Rite i1Pro 2
Source: Phabrix Sx



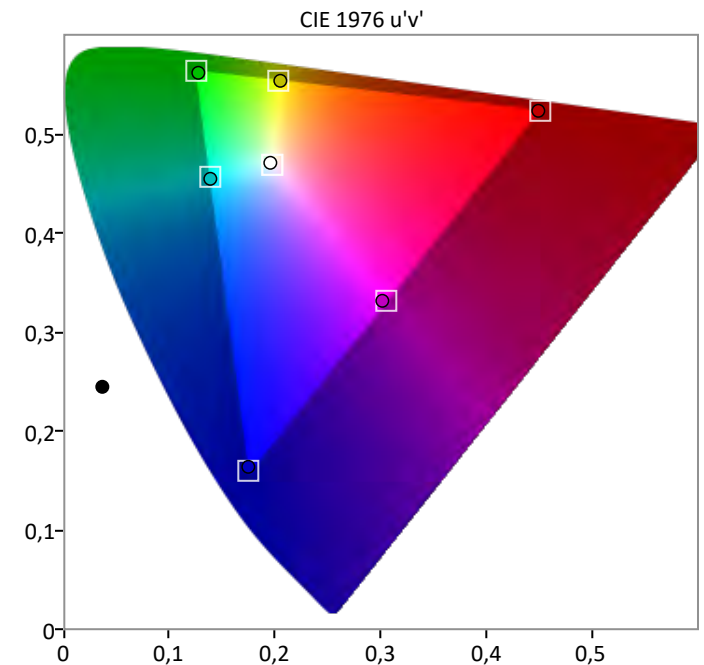
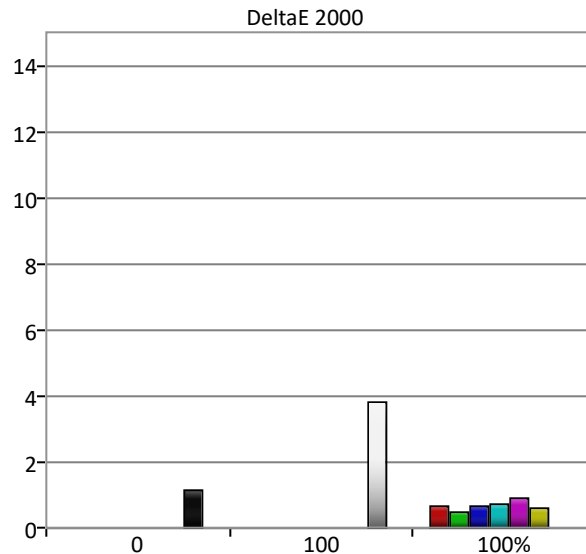
Grayscale

Grayscale Avg dE: 2000 3,3
Grayscale Max dE: 2000 4,5



Colorspace

Colorspace Avg dE: 2000 1,1
Colorspace Max dE: 2000 3,8





CHRISTIAN SAURE
DIGITAL IMAGING TECHNICIAN
POSTPRODUCTION

Post Calibration

Name: Christian Saure

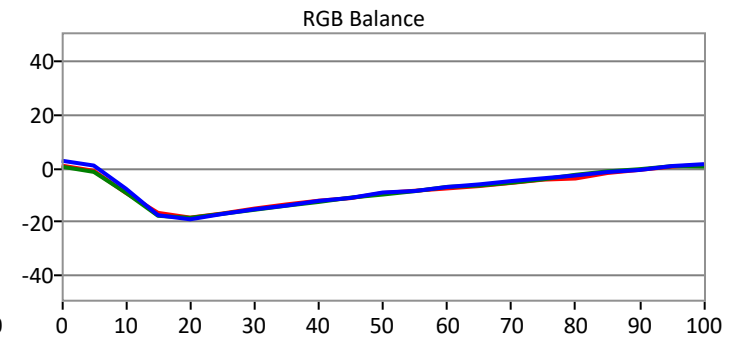
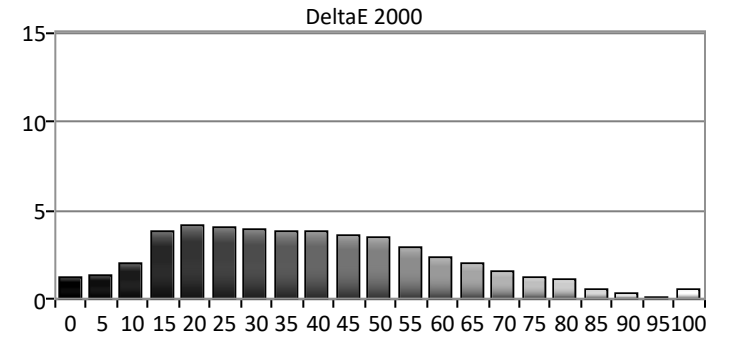
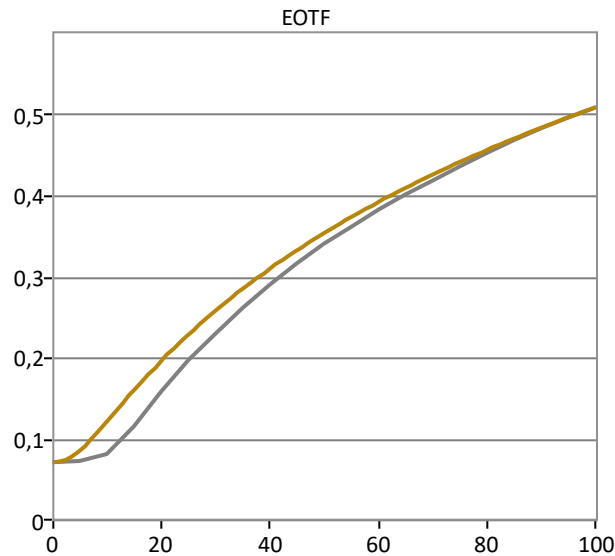
Manufacturer: TvLogic
Model: LUM-310R

Meter: X-Rite i1Pro 2
Source: Phabrix Sx



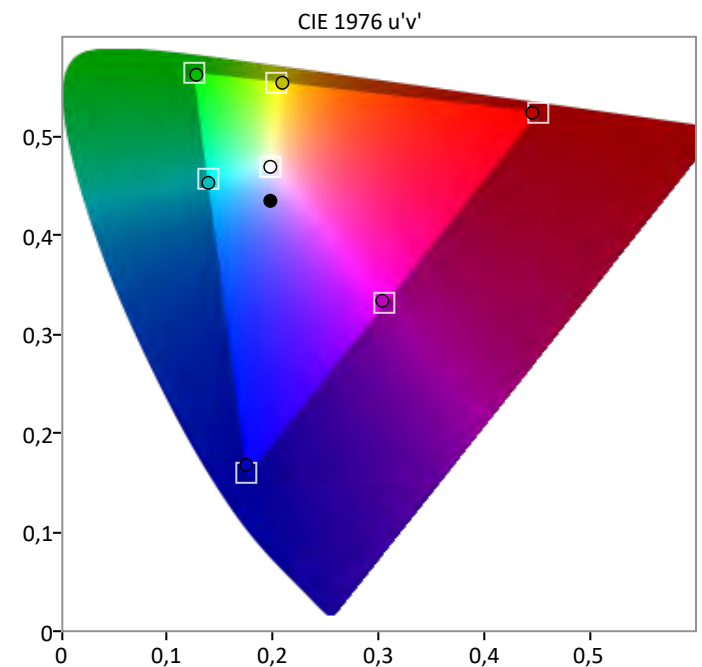
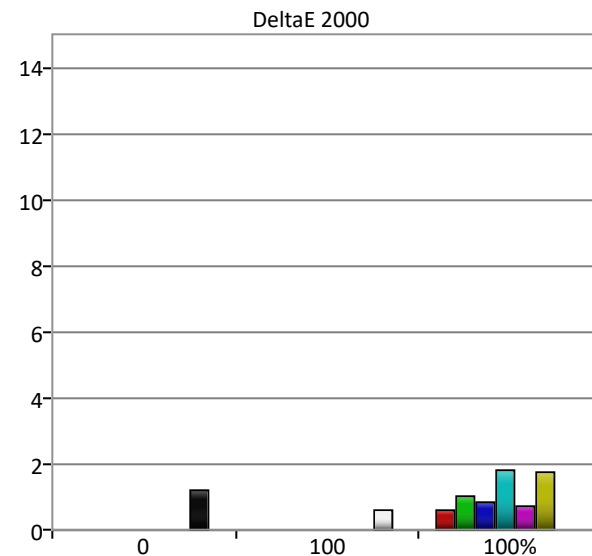
Grayscale

Grayscale Avg dE: 2000 2,4
Grayscale Max dE: 2000 4,2



Colorspace

Colorspace Avg dE: 2000 1,1
Colorspace Max dE: 2000 1,8





CHRISTIAN SAURE
DIGITAL IMAGING TECHNICIAN
POSTPRODUCTION

ColorChecker

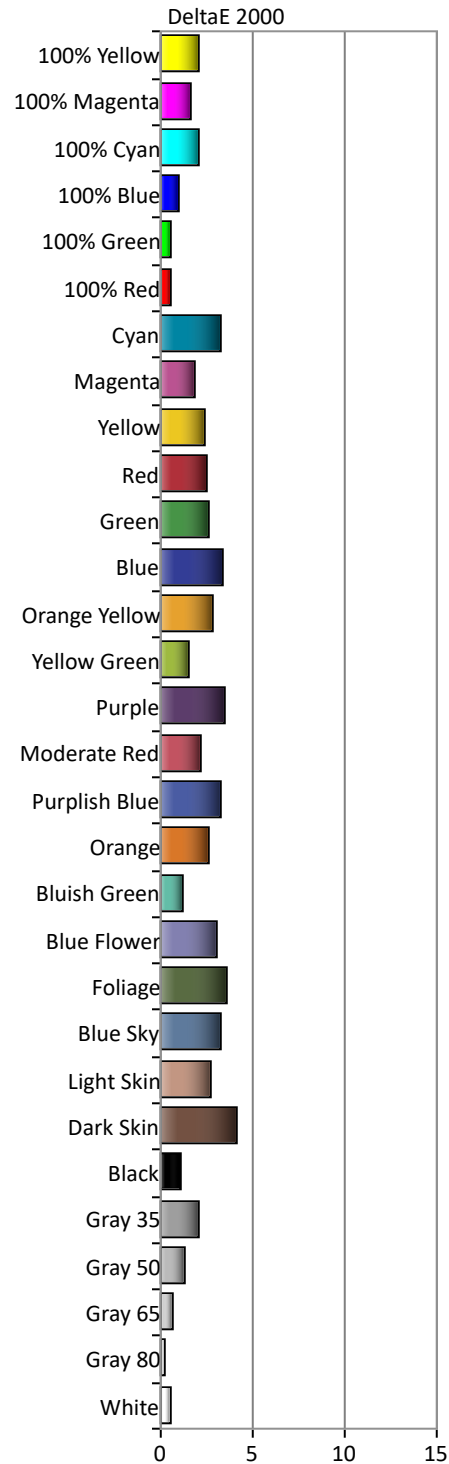
Name: Christian Saure

Manufacturer: TvLogic
Model: LUM-310R

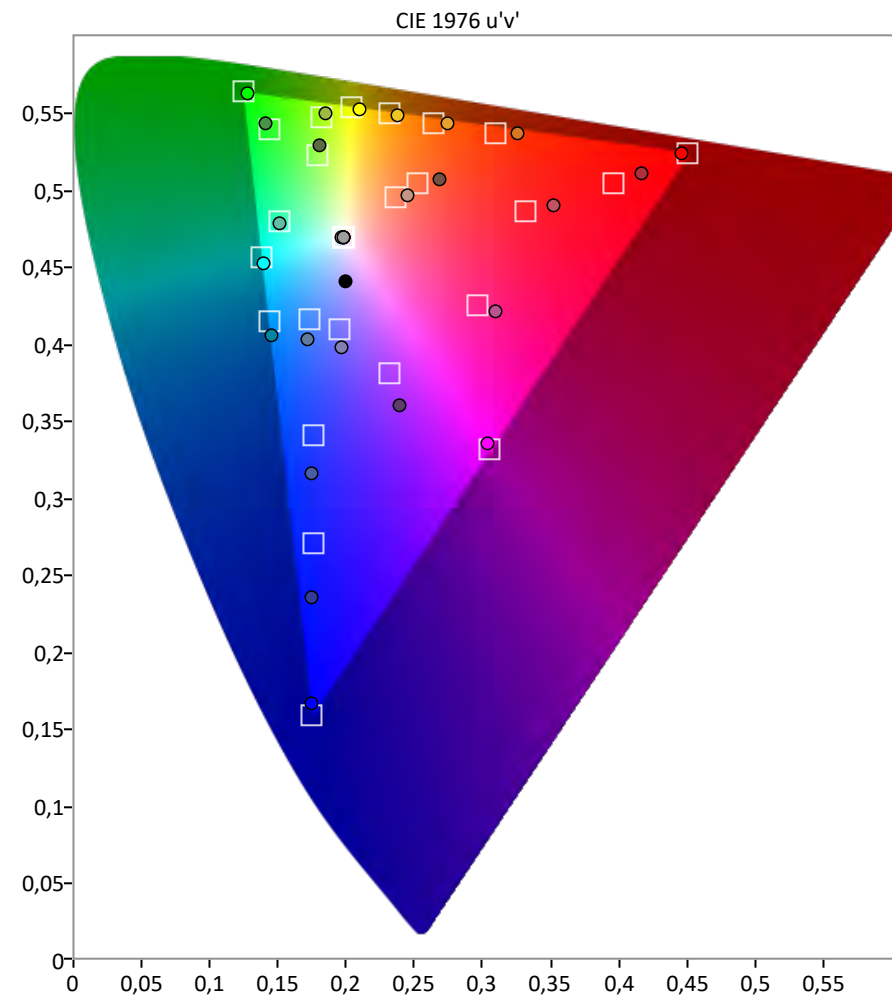
Meter: X-Rite i1Pro 2
Source: Phabrix Sx



ColorChecker



Saturations Avg dE: 2000 2,2
Saturations Max dE: 2000 4,1



Saturation Sweeps



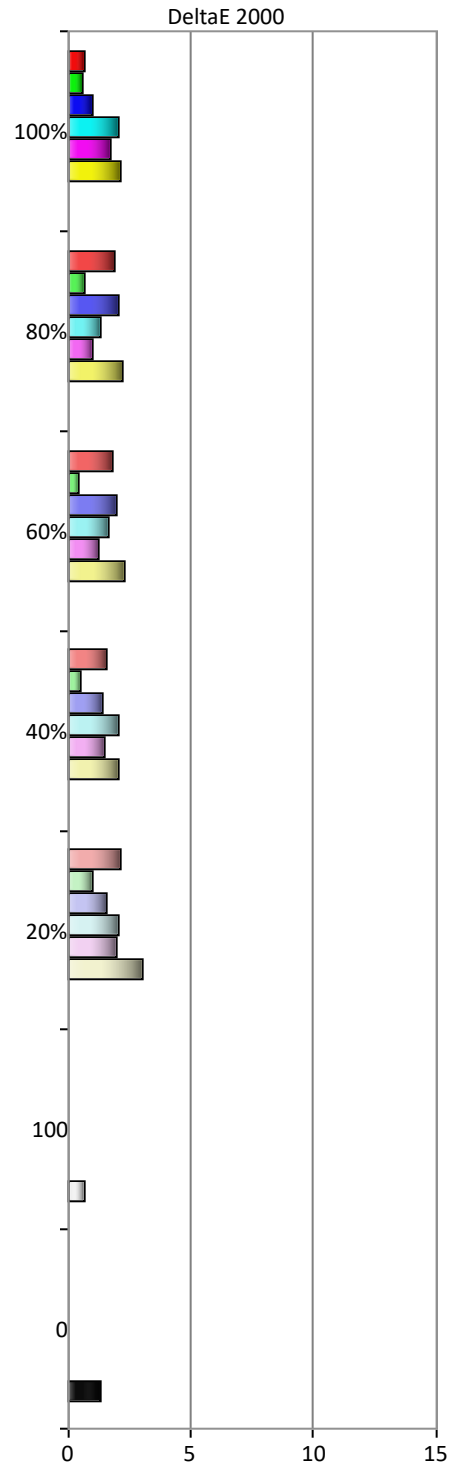
CHRISTIAN SAURE
DIGITAL IMAGING TECHNICIAN
POSTPRODUCTION

Saturations

Name: Christian Saure

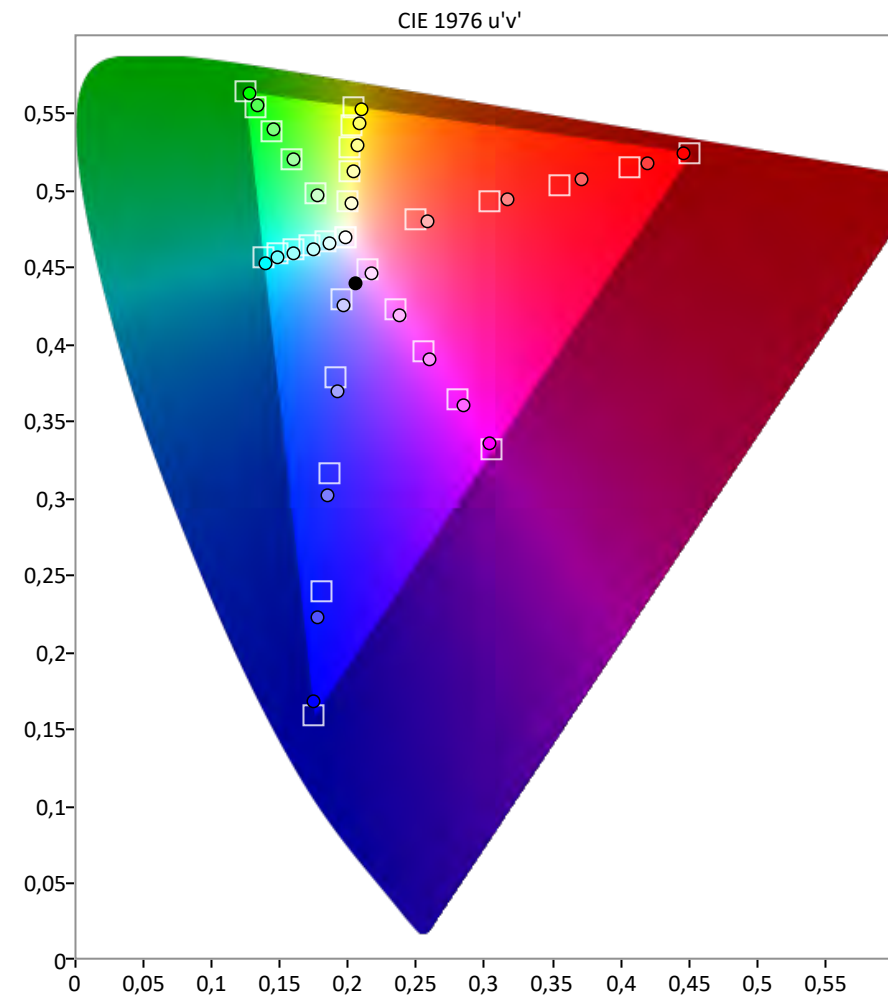
Manufacturer: TvLogic
Model: LUM-310R

Meter: X-Rite i1Pro 2
Source: Phabrix Sx



Saturations Avg dE: 2000 1,6

Saturations Max dE: 2000 3,1





CHRISTIAN SAURE
DIGITAL IMAGING TECHNICIAN
POSTPRODUCTION

Pre Calibration

Name: Christian Saure

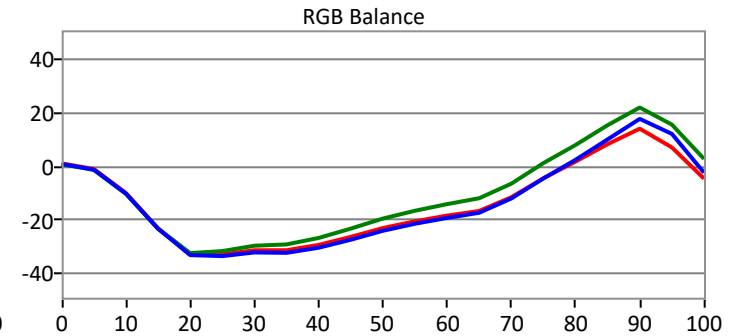
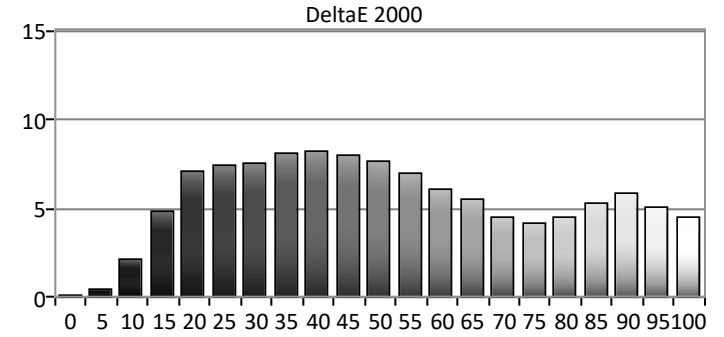
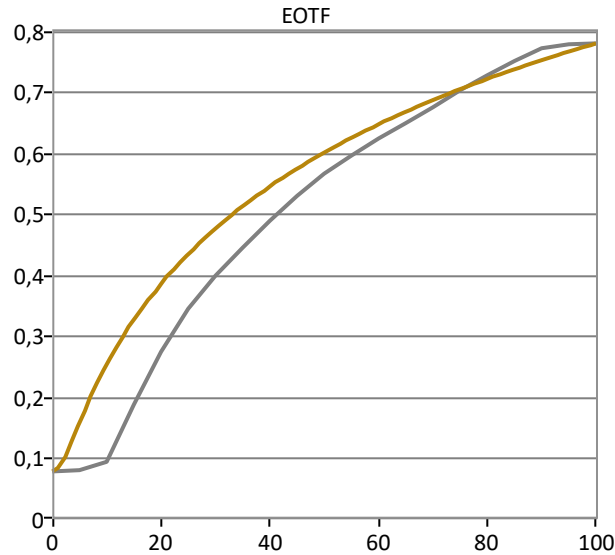
Manufacturer: Atomos
Model: NEON24

Meter: X-Rite i1Pro 2
Source: Phabrix Sx



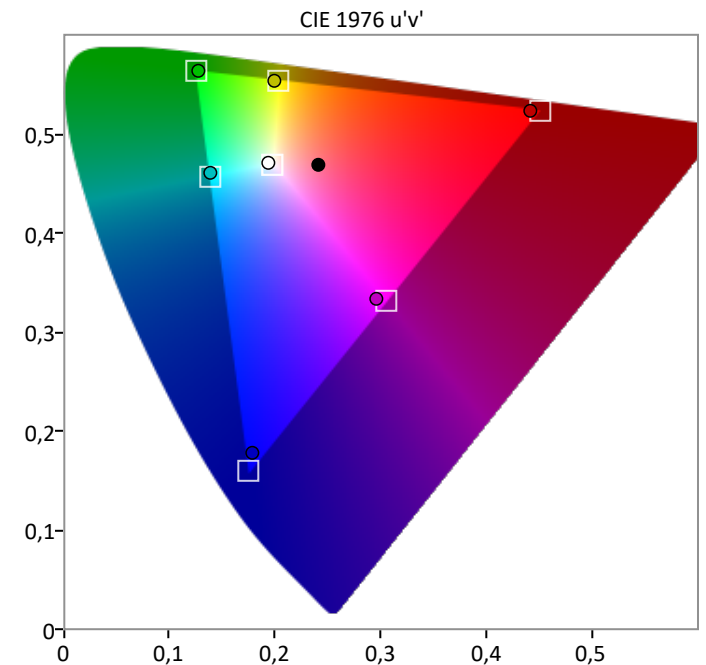
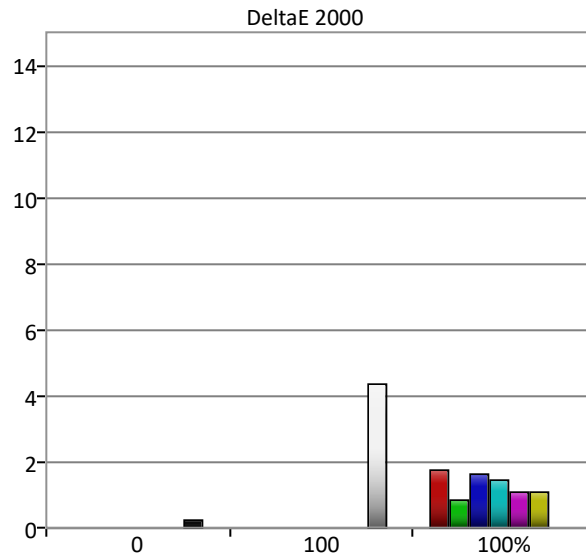
Grayscale

Grayscale Avg dE: 2000 5,7
Grayscale Max dE: 2000 8,2



Colorspace

Colorspace Avg dE: 2000 1,8
Colorspace Max dE: 2000 4,4





CHRISTIAN SAURE
DIGITAL IMAGING TECHNICIAN
POSTPRODUCTION

Post Calibration

Name: Christian Saure

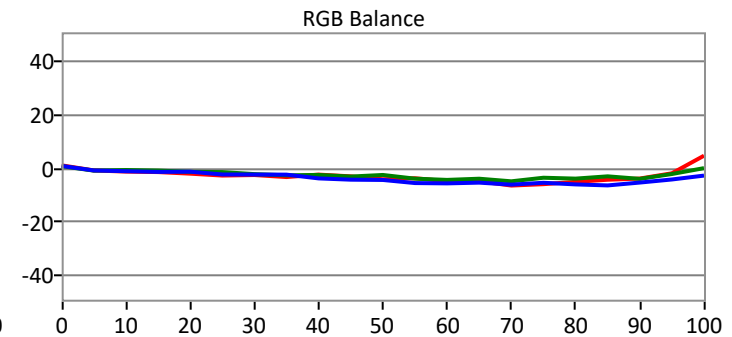
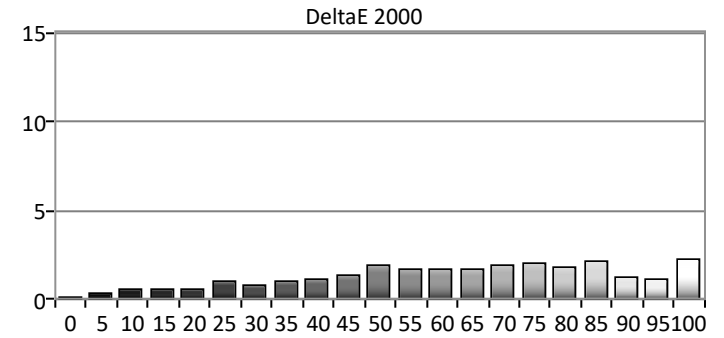
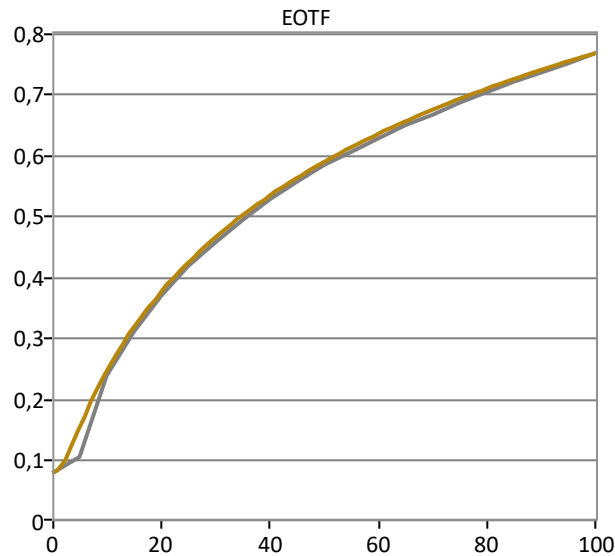
Manufacturer: Atomos
Model: NEON24

Meter: X-Rite i1Pro 2
Meter Mode: Direct View



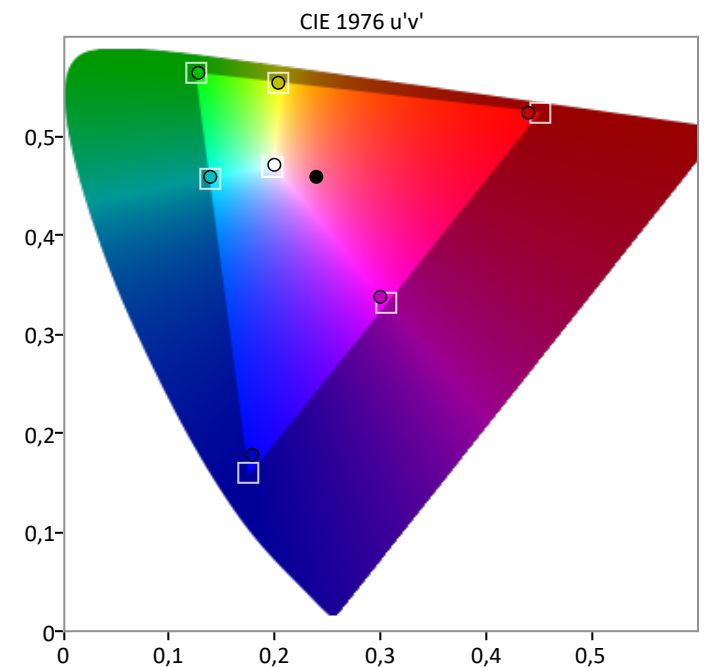
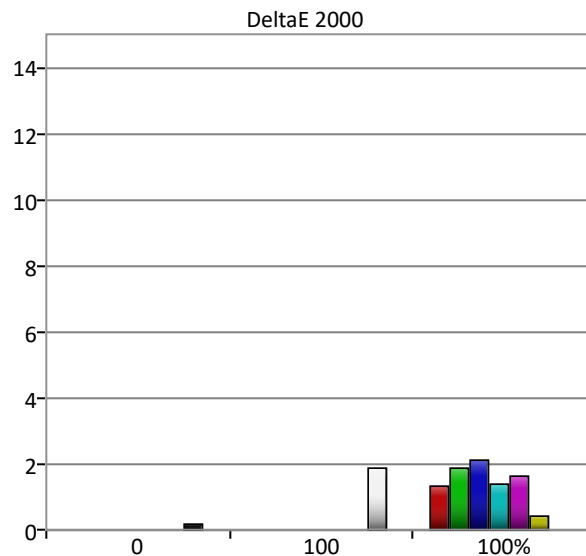
Grayscale

Grayscale Avg dE: 2000 1,4
Grayscale Max dE: 2000 2,3



Colorspace

Colorspace Avg dE: 2000 1,5
Colorspace Max dE: 2000 2,2





CHRISTIAN SAURE
DIGITAL IMAGING TECHNICIAN
POSTPRODUCTION

ColorChecker

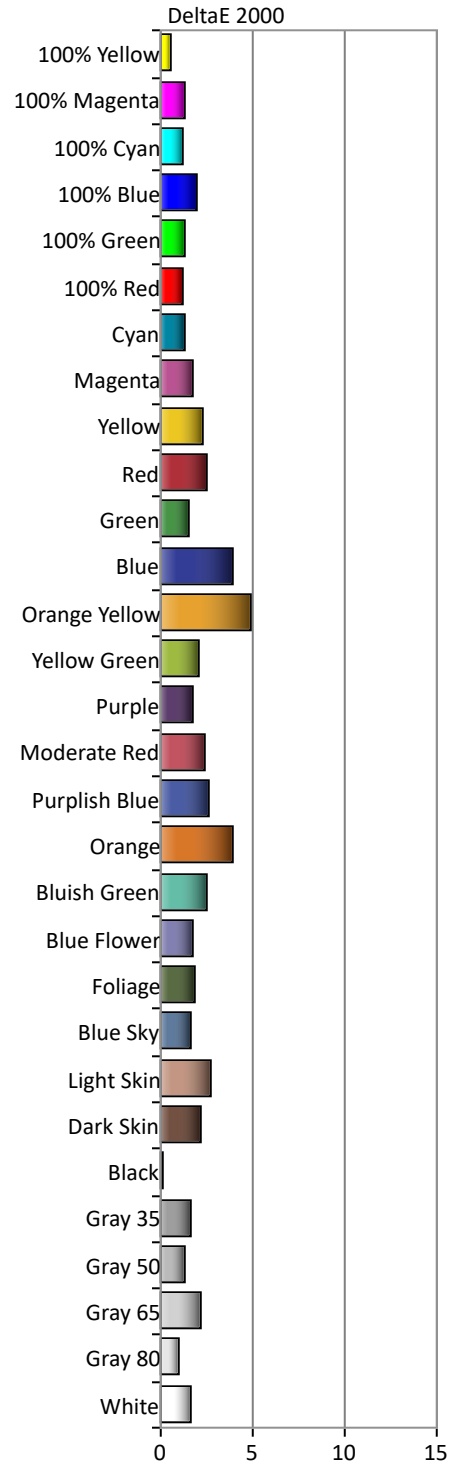
Name: Christian Saure

Manufacturer: Atomos
Model: NEON24

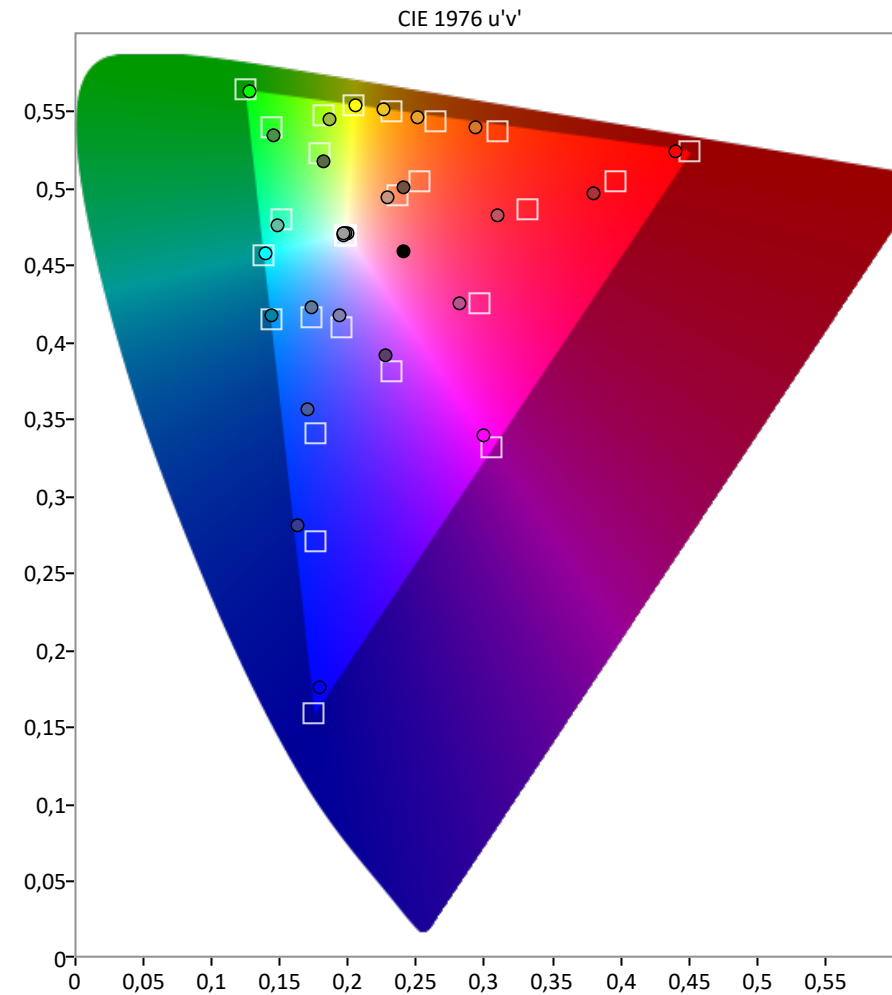
Meter: X-Rite i1Pro 2
Meter Mode: Direct View



ColorChecker



Saturations Avg dE: 2000 2,1
Saturations Max dE: 2000 5



Saturation Sweeps



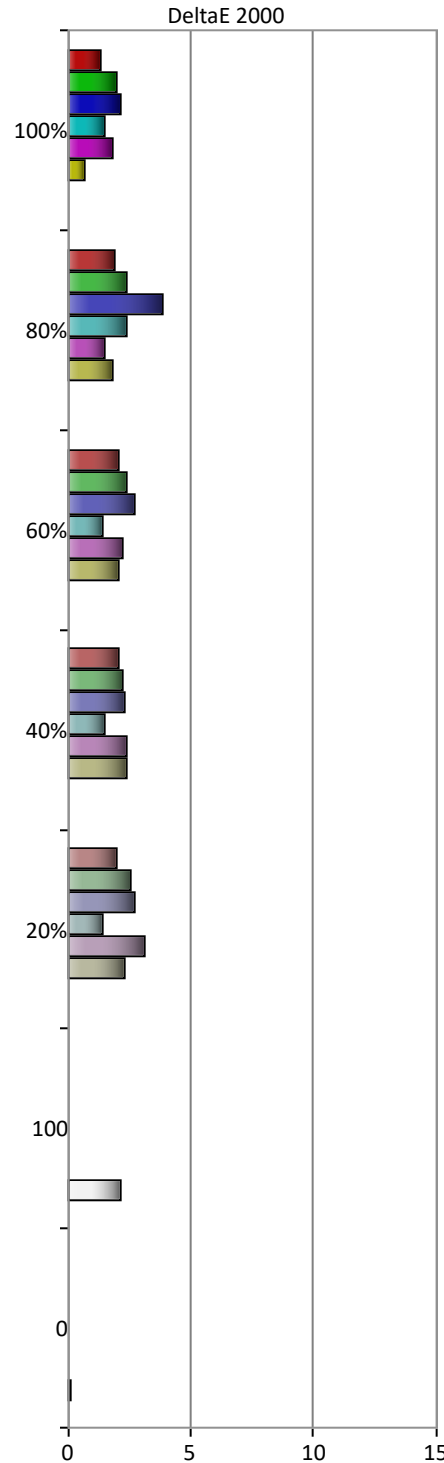
CHRISTIAN SAURE
DIGITAL IMAGING TECHNICIAN
POSTPRODUCTION

Saturations

Name: Christian Saure

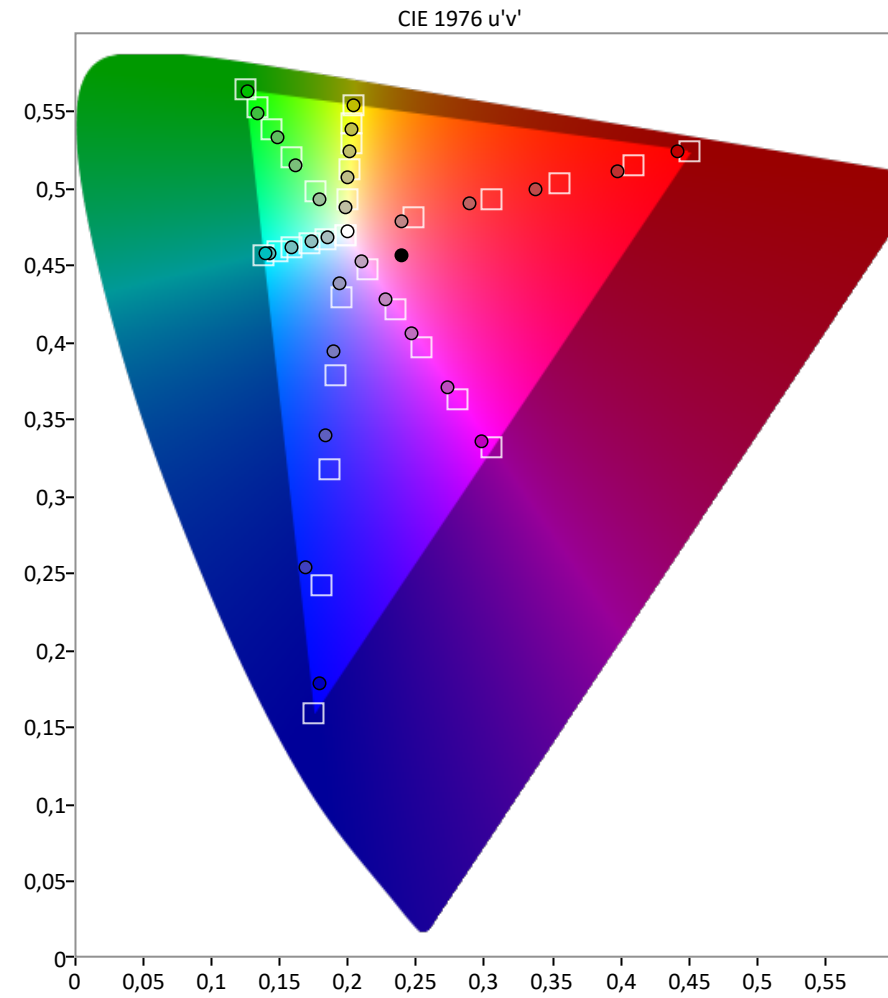
Manufacturer: Atomos
Model: NEON24

Meter: X-Rite i1Pro 2
Meter Mode: Direct View



Saturations Avg dE: 2000 2,1

Saturations Max dE: 2000 3,9





CHRISTIAN SAURE
DIGITAL IMAGING TECHNICIAN
POSTPRODUCTION

Pre Calibration

Name: Christian Saure

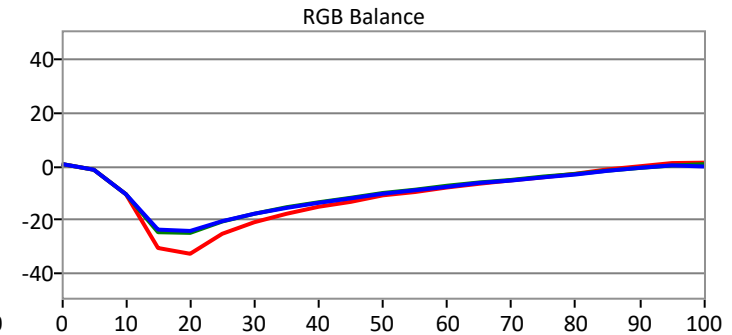
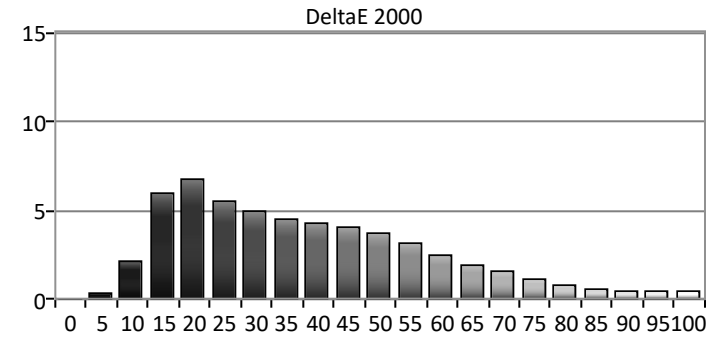
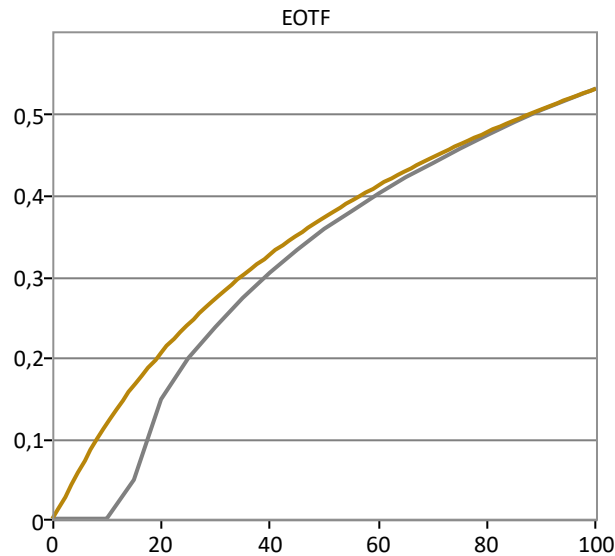
Manufacturer: Sony
Model: PVM-X1800

Meter: X-Rite i1Pro 2
Source: Phabrix Sx



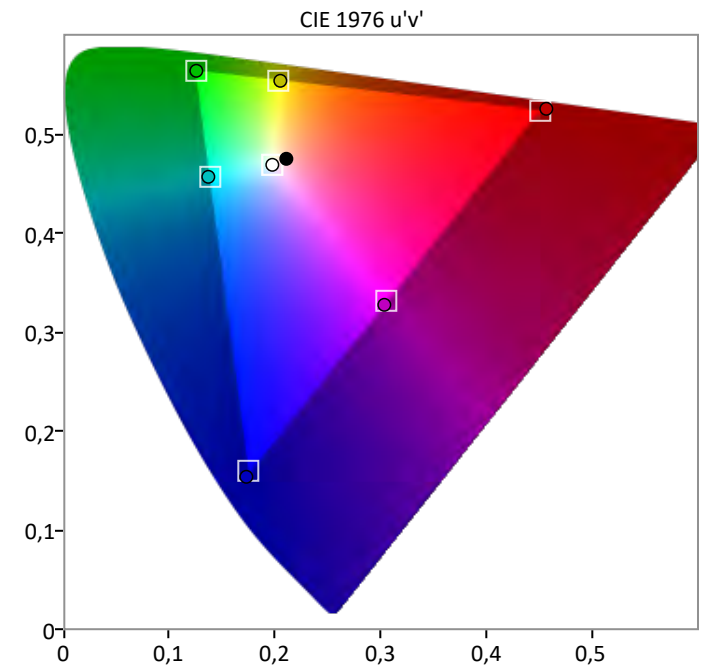
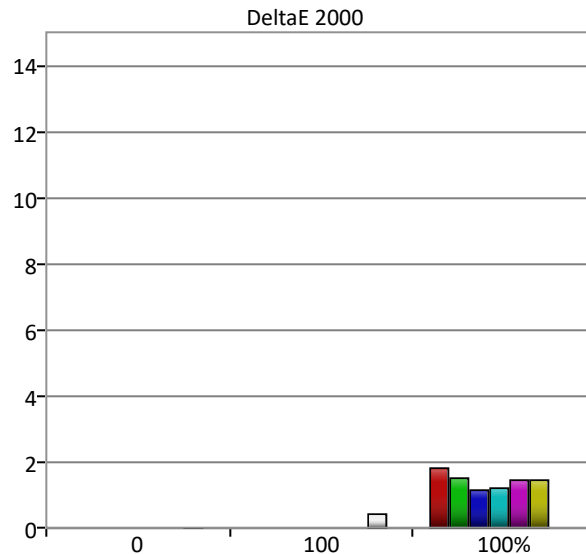
Grayscale

Grayscale Avg dE: 2000 2,8
Grayscale Max dE: 2000 6,7



Colorspace

Colorspace Avg dE: 2000 1,3
Colorspace Max dE: 2000 1,9





CHRISTIAN SAURE
DIGITAL IMAGING TECHNICIAN
POSTPRODUCTION

Post Calibration

Name: Christian Saure

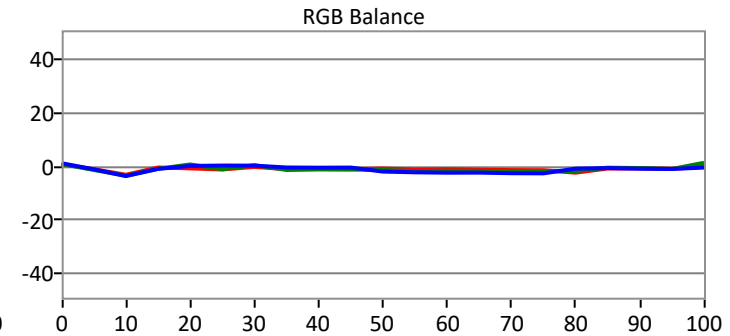
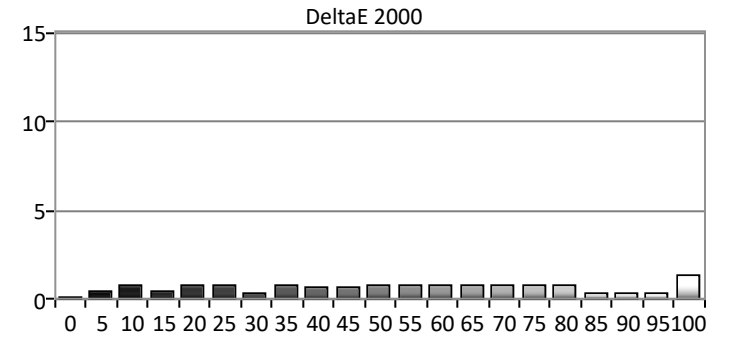
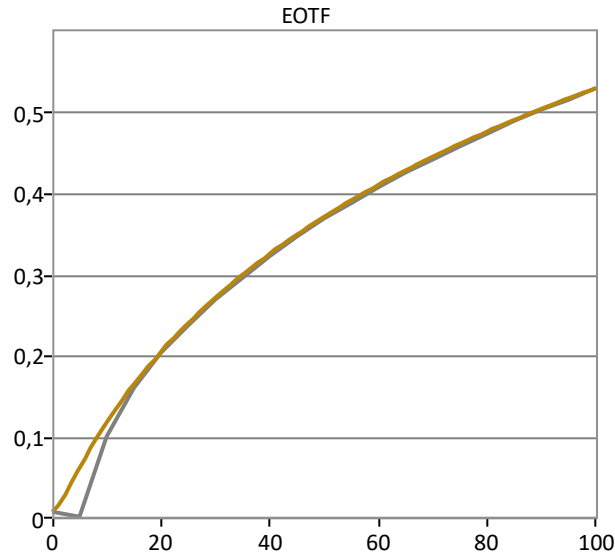
Manufacturer: Sony
Model: PVM-X1800

Meter: X-Rite i1Pro 2
Meter Mode: Direct View



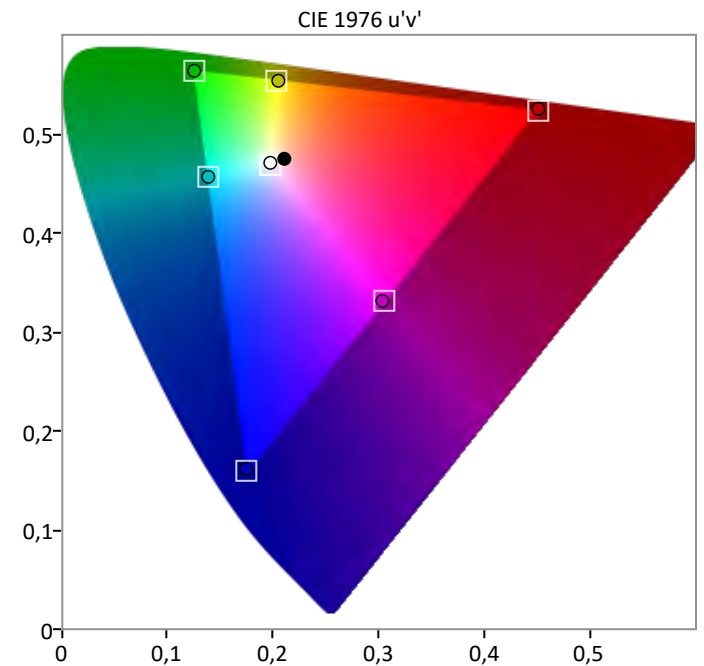
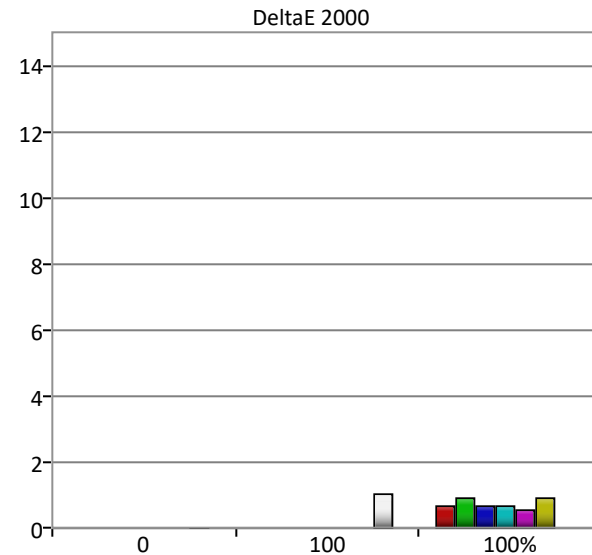
Grayscale

Grayscale Avg dE: 2000 0,7
Grayscale Max dE: 2000 1,3



Colorspace

Colorspace Avg dE: 2000 0,8
Colorspace Max dE: 2000 1





CHRISTIAN SAURE
DIGITAL IMAGING TECHNICIAN
POSTPRODUCTION

ColorChecker

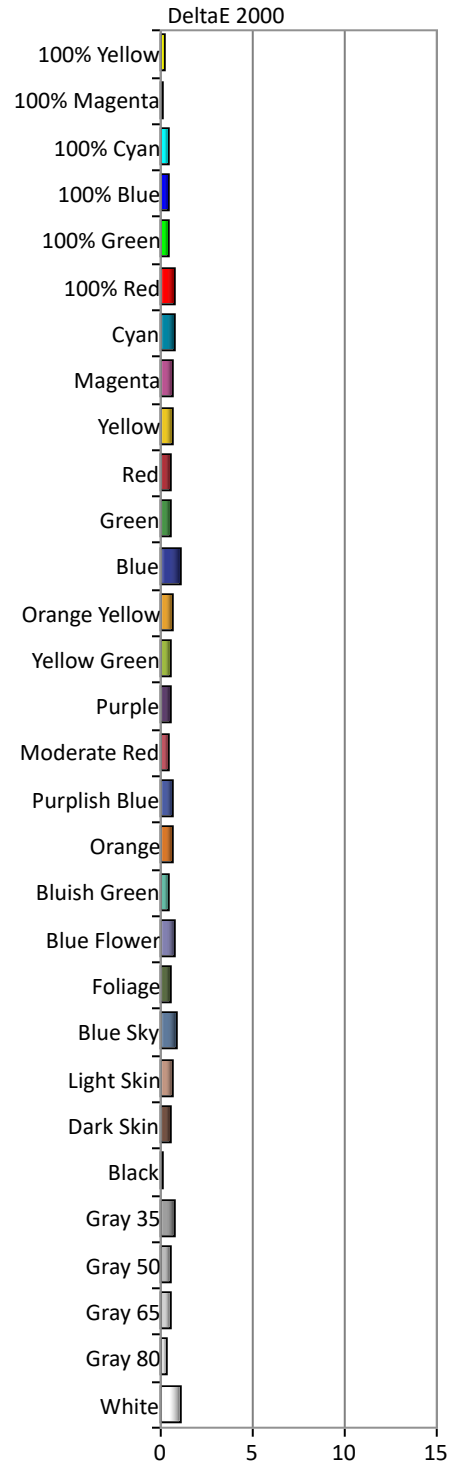
Name: Christian Saure

Manufacturer: Sony
Model: PVM-X1800

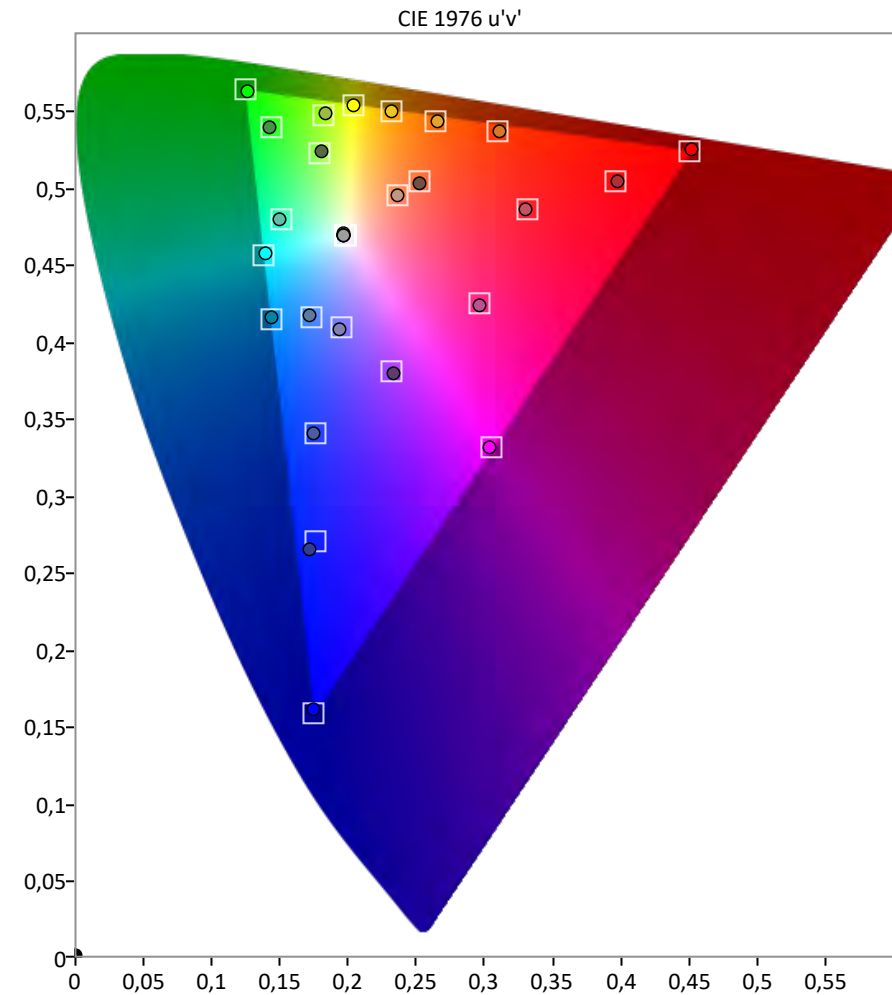
Meter: X-Rite i1Pro 2
Meter Mode: Direct View



ColorChecker



Saturations Avg dE: 2000 0,7
Saturations Max dE: 2000 1,2





CHRISTIAN SAURE
DIGITAL IMAGING TECHNICIAN
POSTPRODUCTION

Pre Calibration

Name: Christian Saure

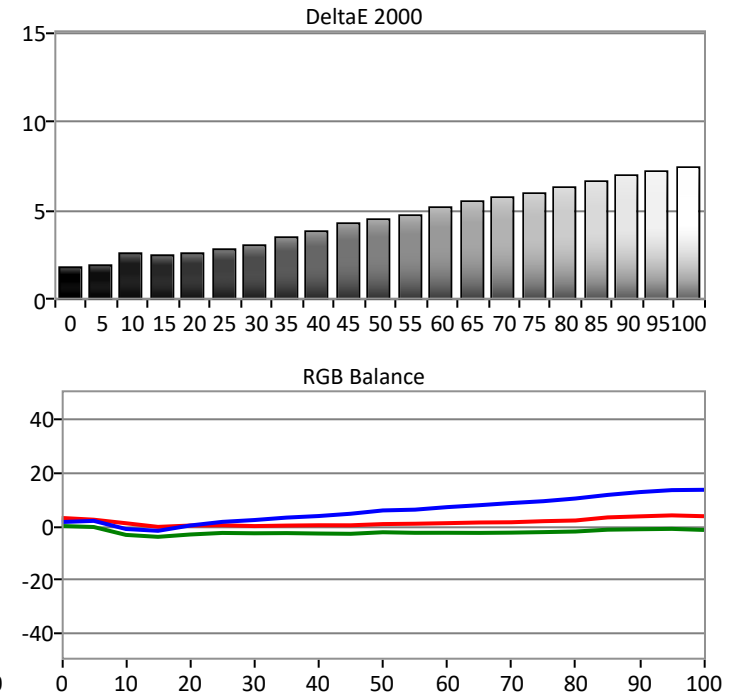
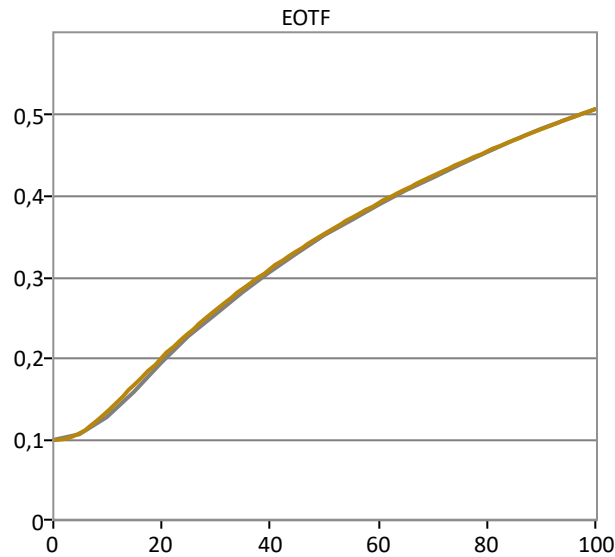
Manufacturer: Sony
Model: PVM-X2400

Meter: X-Rite i1Pro 2
Source: Phabrix Sx



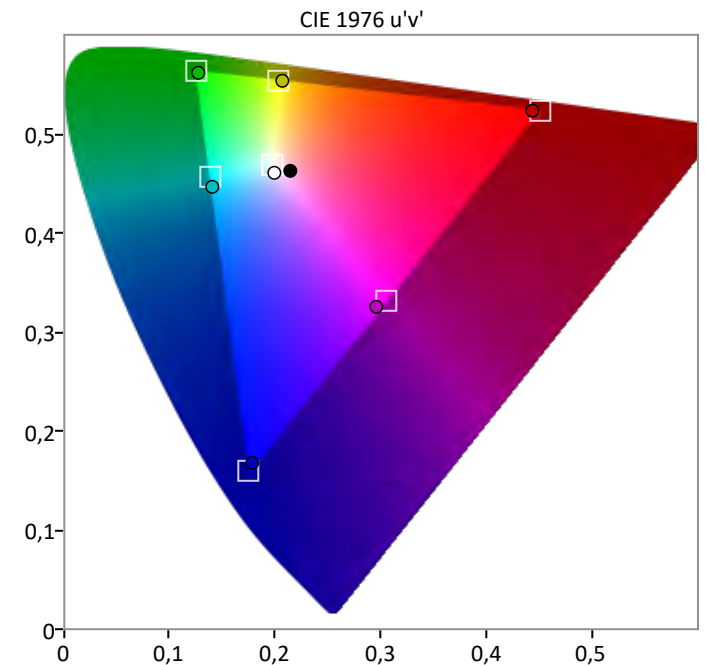
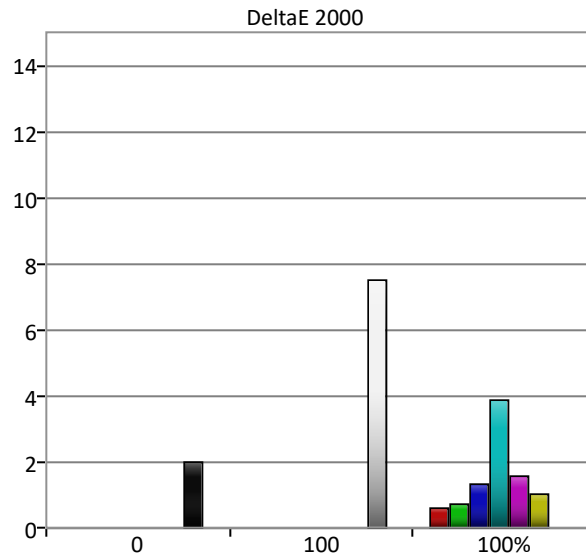
Grayscale

Grayscale Avg dE: 2000 4,7
Grayscale Max dE: 2000 7,5



Colorspace

Colorspace Avg dE: 2000 2,4
Colorspace Max dE: 2000 7,5





CHRISTIAN SAURE
DIGITAL IMAGING TECHNICIAN
POSTPRODUCTION

Post Calibration

Name: Christian Saure

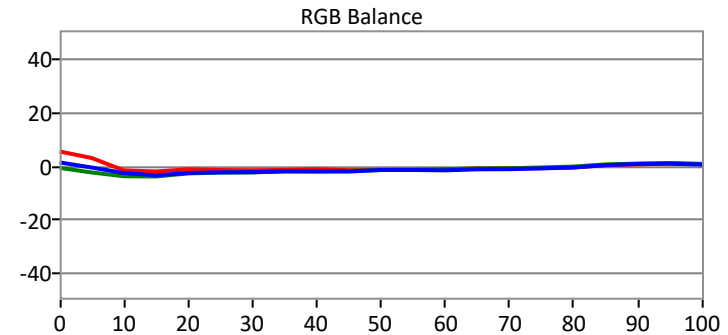
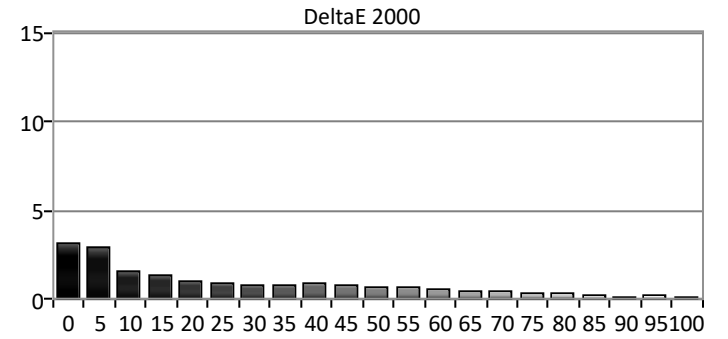
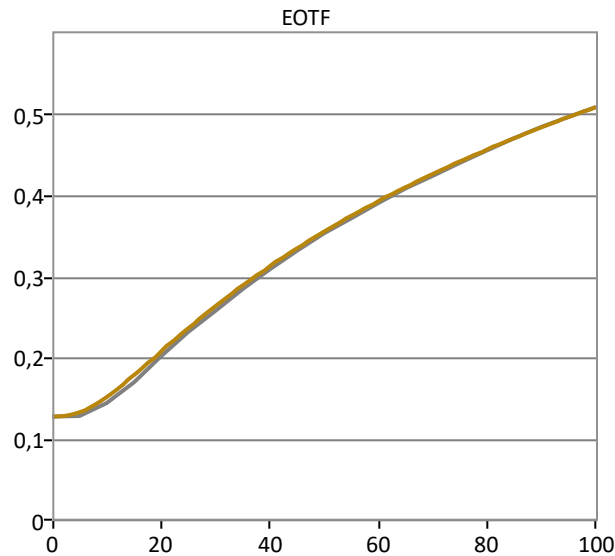
Manufacturer: Sony
Model: PVM-X2400

Meter: X-Rite i1Pro 2
Meter Mode: Direct View



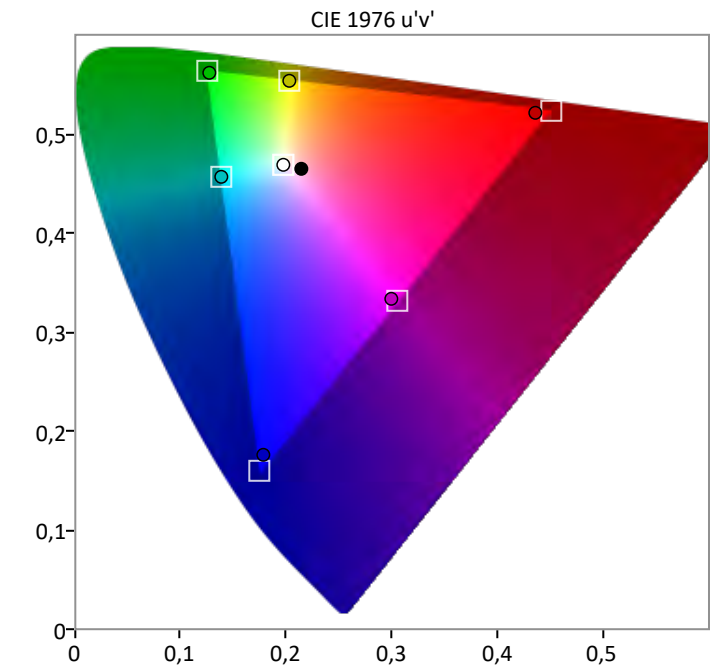
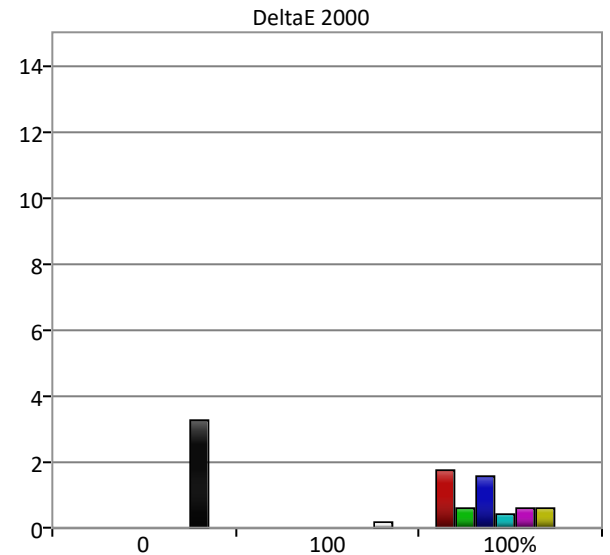
Grayscale

Grayscale Avg dE: 2000 0,8
Grayscale Max dE: 2000 2,9



Colorspace

Colorspace Avg dE: 2000 0,8
Colorspace Max dE: 2000 1,8





CHRISTIAN SAURE
DIGITAL IMAGING TECHNICIAN
POSTPRODUCTION

ColorChecker

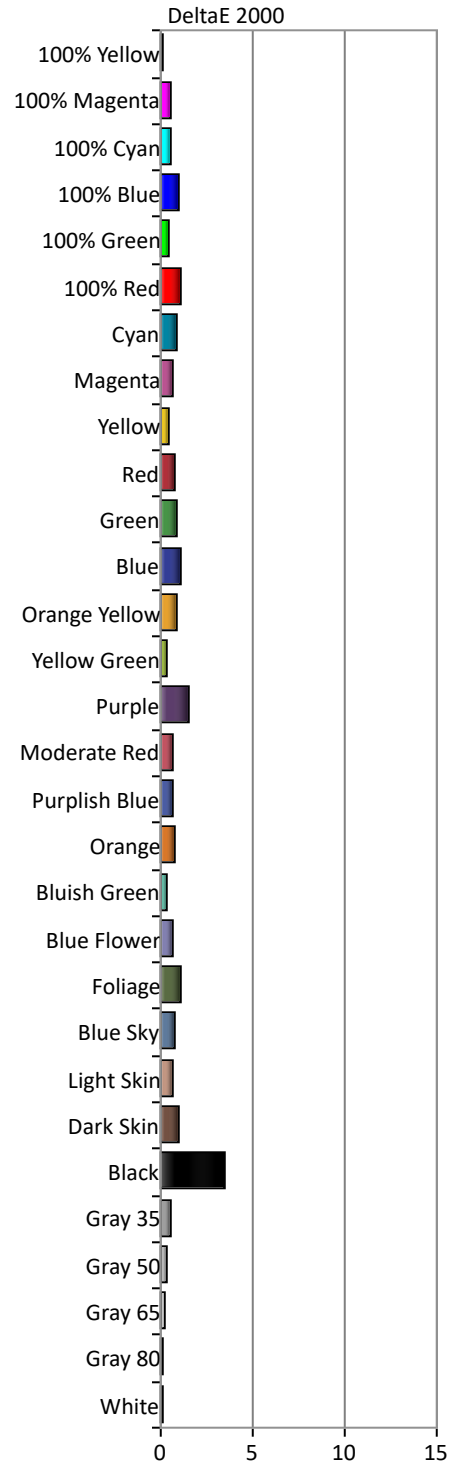
Name: Christian Saure

Manufacturer: Sony
Model: PVM-X2400

Meter: X-Rite i1Pro 2
Meter Mode: Direct View



ColorChecker



Saturations Avg dE: 2000 0,7
Saturations Max dE: 2000 1,6

